



Libuseng Lillian Mokotleng
0824028574
libuseng@choprop.co.za



Lucy Martha Matseba
0842790300
lucy@choprop.co.za

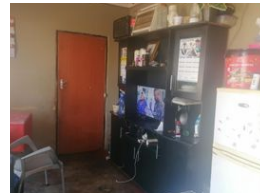
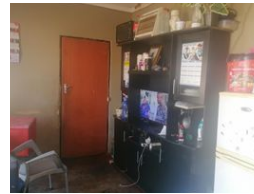
Contact Choprop Sales

012 6534444

146 Willem Botha Street
Wierda Park
0157



Web Ref RL14372



R800,000

 2  1  1

Monthly Bond Repayment R8,257.51
Calculated over 20 years at 11% with no deposit.

Transfer Costs R25,898.00 **Bond Costs** R19,565.00

These calculations are only a guide. Please ask your conveyancer for exact calculations.

6 bedroom house for sale in Mayibuye

This investment property offers 2 bedroom 1 bathroom open plan kitchen and a lounge and a spacious garage
There is an outside extension of 4 rental rooms with an income of +- 4500 per month.

It is situated next to shopping malls, schools, public transport and major roads leading to high way and freeway.

This is a must buy property as it pays itself.

Call your area agent now for more info.

Features

Pets Allowed	Yes			
Interior		Exterior		Sizes
Bedrooms	2	Garages	1	Land Size
Bathrooms	1	Pool	No	234m ²
Kitchens	1			
Recep. Rooms	1			