

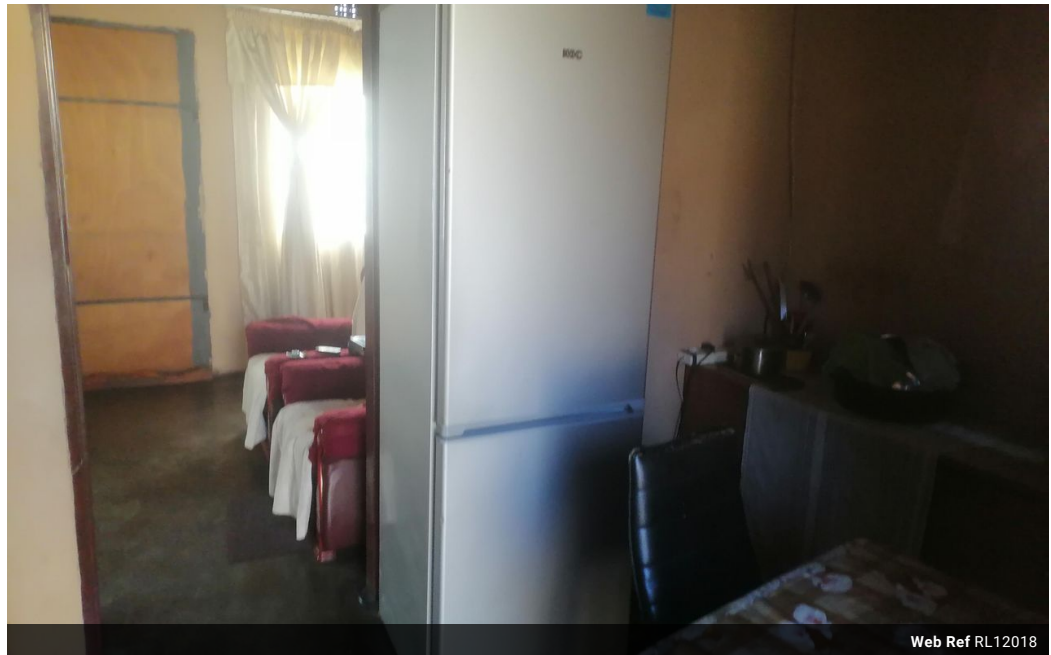


Ntombi Mabaso
078 521 2534
ntombi@choprop.co.za

Contact Choprop Sales

012 6534444

146 Willem Botha Street
Wierda Park
0157



Web Ref RL12018



R600,000

 1
  0
  1

Monthly Bond Repayment R6,193.13
Calculated over 20 years at 11% with no deposit.

Transfer Costs R21,217.00 **Bond Costs** R15,795.00

These calculations are only a guide. Please ask your conveyancer for exact calculations.

Monthly Rates R223

Beautiful home for a growing family well maintained

beautiful family home for your couples and growing family well maintained ,secure perfect for first time buyers and investors who want to invest in property ,it has a lot to offers at a bargain price.

Features

Interior

Bedrooms	1
Kitchens	1
Recep. Rooms	1.5

Exterior

Garages	1
Pool	No

Sizes

Land Size	194m ²
-----------	-------------------