



Bertha Tozana
0645181002
bertha@choprop.co.za

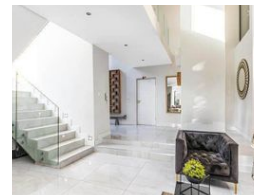
Contact Choprop Sales

012 6534444

146 Willem Botha Street
Wierda Park
0157



Web Ref RL10423



R8,950,000

 4  4.5  2

Monthly Bond Repayment R92,380.86
Calculated over 20 years at 11% with no deposit.

Transfer Costs R859,714.00 **Bond Costs** R80,035.00
These calculations are only a guide. Please ask your conveyancer for exact calculations.

Monthly Levy R2,500 **Monthly Rates** R3,600

4 Bedroom Cluster For Sale in Woodmead

Extraordinary! Sophistication!

This Modern extraordinary family home offers:

Huge entrance hall leading to airy and open living areas (lounge, dining areas and a TV room).

4 spacious bedrooms with fitted cupboards, 4 delightful en-suite bathrooms.

Open plan chef's dream kitchen with a separate scullery and laundry rooms.

The property also has staff quarters with a bathroom.

Double garage and plenty of parking spaces.

A large and exquisite covered patio leads on to a gigantic sparkling swimming pool and landscaped garden perfect for entertaining.

The estate offers great 24 hours security, clubhouse, tennis court and kiddies play area.

Seeing is believing.....

Features

Pets Allowed Yes

Interior
Bedrooms 4
Bathrooms 4.5
Kitchens 1
Recep. Rooms 3
Studies 1
Furnished No

Exterior
Garages 2
Security Yes
Dom. Accom. 1
Pool Yes
Views Yes

Sizes
Floor Size 570m²
Land Size 750m²