

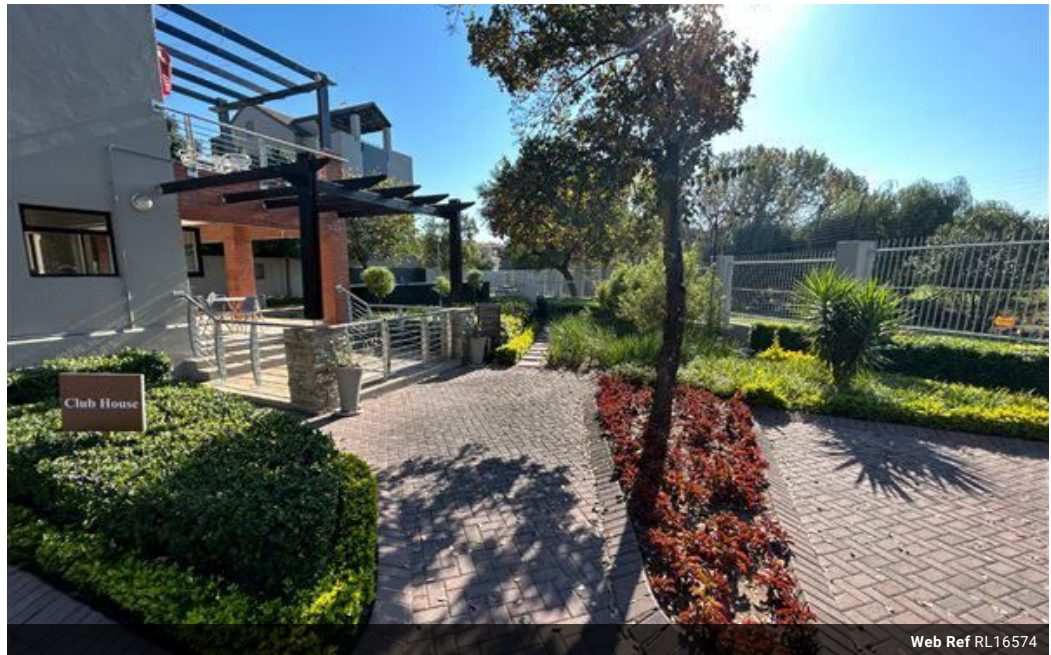


Bertha Tozana
0645181002
bertha@choprop.co.za

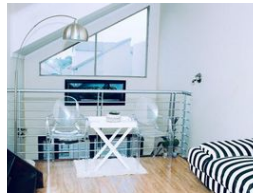
Contact Choprop Sales

012 6534444

146 Willem Botha Street
Wierda Park
0157



Web Ref RL16574



R1,299,000

 2  1

Monthly Bond Repayment R13,408.13
Calculated over 20 years at 11% with no deposit.

Transfer Costs R37,587.00 **Bond Costs** R27,105.00

These calculations are only a guide. Please ask your conveyancer for exact calculations.

Monthly Levy R2,700 **Monthly Rates** R950

CHIC! MODERN! LOFT APARTMENT!

Calling all Investors, Young Executives and Professionals!
Chic, Functional, Modern and stylish.

Featuring: Open plan kitchen with Caesarstone countertops, flows into a living area with big upmarket tiles leading to the balcony.

Up the stairs is the loft area with laminated wood flooring, which flows onto a massive roof terrace with great scintillate views of Lonehill and Paulshof.

The bedrooms are sizeable with dark wood laminated flooring.

The bathroom has a divine free standing bath, with a shower, chic toilet and basin.

Interior Finishes are more updated than those of other units at The Crest, because of renovations.

Total unit space: 116 m2 (one of the biggest units at The Crest)

A prime investment for a corporates and ideal for singles, couples or a small family.

1 Parking bay with 1 visitor parking right...

Features

Interior

Bedrooms	2
Bathrooms	1
Kitchens	1
Recep. Rooms	2
Studies	1
Furnished	No

Exterior

Carports / Parkings	2
Security	Yes
Pool	Yes
Views	Yes

Sizes

Floor Size	116m ²
------------	-------------------