

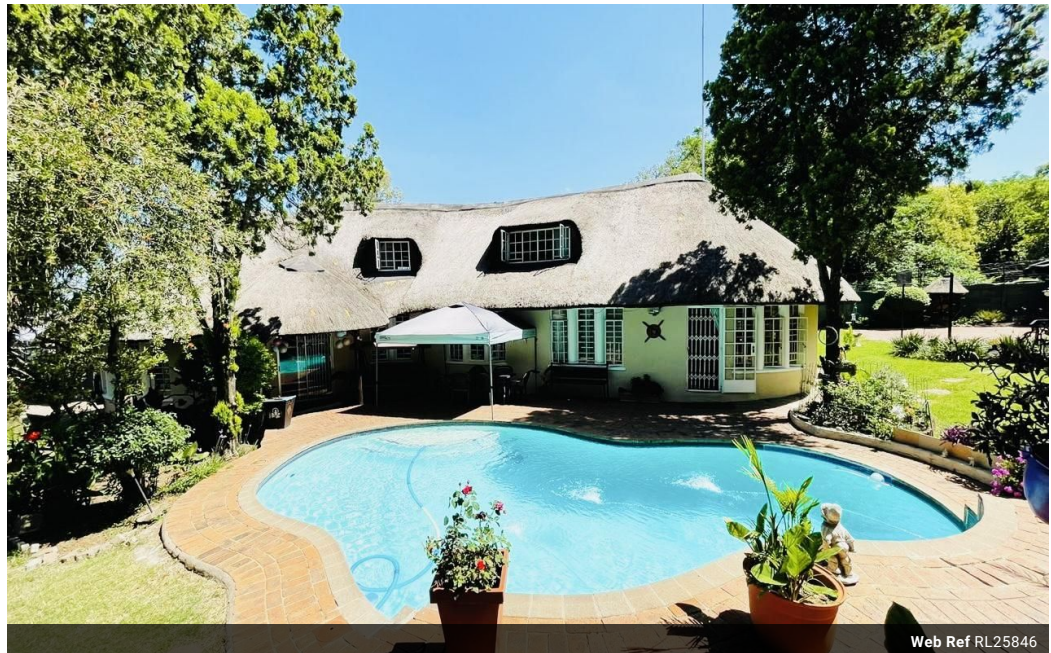


Bertha Tozana
0645181002
bertha@choprop.co.za

Contact Choprop Sales

012 6534444

146 Willem Botha Street
Wierda Park
0157



Web Ref RL25846



R2,299,000

 6  4

Monthly Bond Repayment R23,730.01
Calculated over 20 years at 11% with no deposit.

Transfer Costs R98,078.00 **Bond Costs** R36,530.00

These calculations are only a guide. Please ask your conveyancer for exact calculations.

Monthly Rates R1,200

Spacious 6 Beds Family Home with Exceptional Features.

This extraordinary family home boasts 6 bedrooms and 4 bathrooms, including two main en-suite bedrooms. Designed for comfort and functionality, this home offers luxurious living with top-tier security and entertainment features.

Ground Floor:

The spacious main bedroom is located downstairs and was designed with luxury in mind. It includes ample cupboard space, a full en-suite bathroom, and a camera connection for added security. It has a private entrance leading to the beautiful garden and a sparkling swimming pool.

The second and third bedrooms share a family bathroom and offer stunning pool views.

The home features a fully functional kitchen with space for two wet appliances, a walk-in pantry, extra storage, a scullery, a double-door fridge, an eye-level double oven, and a gas stove. A breakfast nook overlooks the...

Features

Pets Allowed Yes

Interior

Bedrooms	6
Bathrooms	4
Kitchens	1
Recep. Rooms	2
Studies	1
Furnished	No

Exterior

Carports / Parkings	3
Security	Yes
Dom. Accom.	1
Pool	Yes
Views	Yes

Sizes

Land Size	1,604m ²
-----------	---------------------

Extras

Outdoor Beams