



**Hlamalani Suprise
Chauke**
0710339843
hlamalani@choprop.co.za

Contact Choprop Sales

0126534444
0126534444

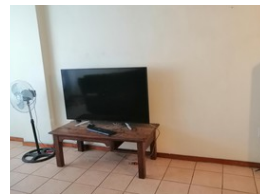
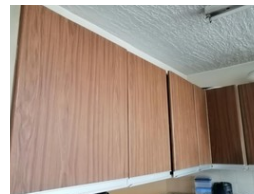
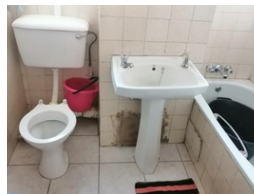
146 Willem Botha Street
Wierda Park
0157

2.5 Bedroom Flat For Sale in Silverton



SOLE MANDATE, FNB QUICKSELL

Web Ref RL8944



R595,000

 2.5  1  1

Monthly Bond Repayment R6,141.52

Calculated over 20 years at 11% with no deposit.

Transfer Costs R21,217.00 **Bond Costs** R15,795.00

These calculations are only a guide. Please ask your conveyancer for exact calculations.

Monthly Levy R1,000 **Monthly Rates** R582

SPACIOUS FLAT ON SALE

This specious flat offer 2 and 1/2 bedrooms, 1 full bathroom fitted with bathtub, shower, basin and toilet. kitchen with specious lounge that can accommodate dining fittings as well. the flat also offers 1 lockable garage. the flat is accessed through electric gates both vehicle and for pedestrians. public transport is in a walking distance. the following amenities are easily accessible; corner stone college, silverton primary, shopping center, police station, post office and clinic.

CALL NOW AND ARRANGE FOR VIEWING!!!!!!!!!!!!!!

Features

Interior

Bedrooms	2.5
Bathrooms	1
Kitchens	1
Recep. Rooms	1
Furnished	No

Exterior

Garages	1
Security	Yes
Pool	No
Views	No

Sizes

Floor Size	95m²
Land Size	173m²