

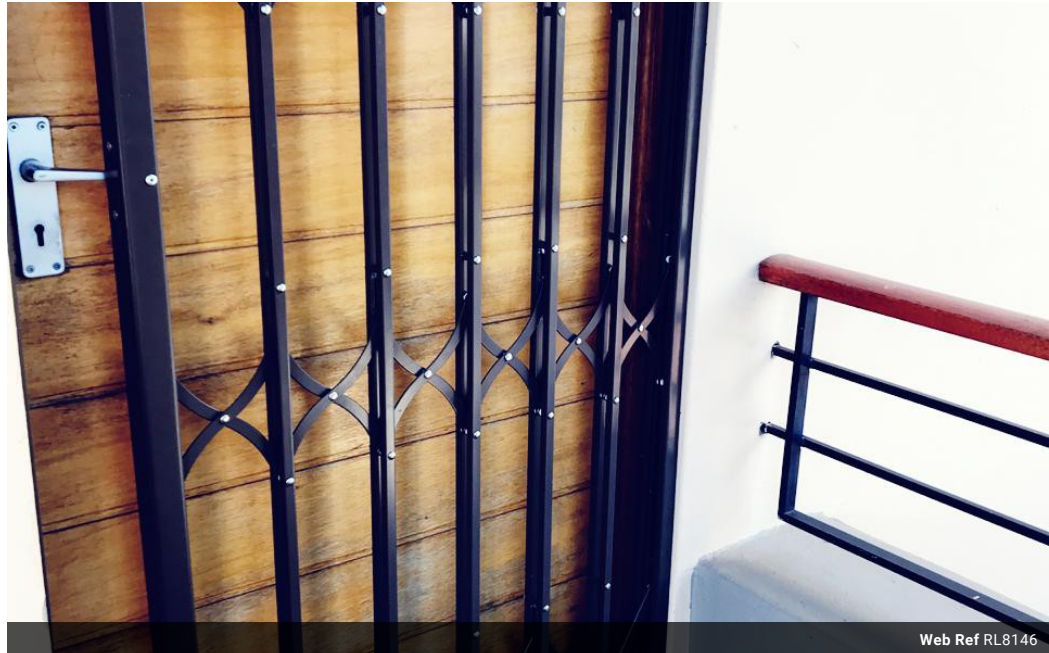


Armaan Essa
0828088886
armaan@choprop.co.za

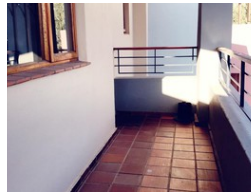
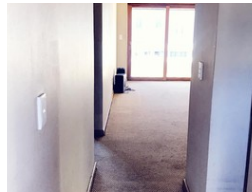
Contact Choprop Sales

0126534444
0126534444

146 Willem Botha Street
Wierda Park
0157



Web Ref RL8146



R865,000

2 1

Monthly Bond Repayment R8,928.43

Calculated over 20 years at 11% with no deposit.

Transfer Costs R28,244.00 **Bond Costs** R21,450.00

These calculations are only a guide. Please ask your conveyancer for exact calculations.

Monthly Levy R1,300 **Monthly Rates** R400 **Special Levy** R195

APARTMENT IN WATERFALL HEIGHTS

This spacious and open plan first floor unit, boasts 2 bedrooms, 1 bathroom and a balcony.

Both bedrooms are carpeted and have built in cupboards. In addition the kitchen has built in cupboards as well, tiles, a double sink, a stove, under counter oven and extractor hood. The open plan carpeted living area leads on to a tiled balcony. Further more, this unit has 2 covered parking spaces.

The complex has 2 communal pools (adult and toddler) and a communal entertainment/braai area. It is also in walking distance to Mall of Africa, and easy access to all major routes as well as to schools, office parks, the Gautrain and place of worship.

Features

Pets Allowed	Yes				
Interior		Exterior		Sizes	
Bedrooms	2	Carports / Parkings	2	Floor Size	72m²
Bathrooms	1	Security	Yes		
Kitchens	1	Pool	Yes		
Recep. Rooms	1				
Furnished	No				