



Shakera Nalla
0824904922
shakera@choprop.co.za

Contact Choprop Sales

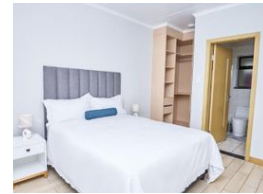
012 6534444

146 Willem Botha Street
Wierda Park
0157

FEATURED



Web Ref RL8863



R1,450,000

Monthly Bond Repayment R14,966.73
Calculated over 20 years at 11% with no deposit.

Transfer Costs R44,285.00 **Bond Costs** R28,990.00

These calculations are only a guide. Please ask your conveyancer for exact calculations.

 2  2

Ground floor Apartment - Neat and Modern

La Maison Royale is the perfect lifestyle estate boasting open spaces, modern and 24 hour security. The estate is home to apartments and cluster style living. There is a communal pool and clubhouse.

This ground floor Apartment consists of:

- Two ensuite bedrooms.
- Open planned reception area adjoining kitchen.
- Ready space for washing machine and dishwasher.(Connection -ready)
- Private Patio and private garden.
- Porcelain tiled spaces.
- 24 hour access security.
- Fibre Ready
- Located close to malls, gyms and restaurants.

Features

Interior

Bedrooms	2
Bathrooms	2
Kitchens	1
Recep. Rooms	1
Furnished	No

Exterior

Carports / Parkings	2
Security	Yes
Pool	Yes
Views	Yes

Sizes

Floor Size	85m ²
------------	------------------

Extras

Built-in Wardrobes Security Shared Pool 24 Hour Access