



Armaan Essa
0828088886
armaan@choprop.co.za

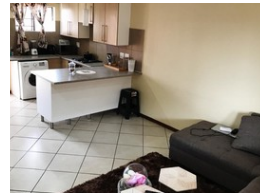
Contact Choprop Sales

0126534444
0126534444

146 Willem Botha Street
Wierda Park
0157



Web Ref RL8145



R745,000

2 1 1

Monthly Bond Repayment R7,689.80

Calculated over 20 years at 11% with no deposit.

Transfer Costs R25,898.00 **Bond Costs** R19,565.00

These calculations are only a guide. Please ask your conveyancer for exact calculations.

Monthly Levy R1,400 **Monthly Rates** R500

FIND YOUR FORTE IN FORTE

This neat as a pin 2 bedroom, 1 bathroom unit is perfect for the investor, bachelor/bachelorette, newly wedded couple or even as start up family.

A complex in an estate, this unit is perfectly situated close to the main road and is in stones throw of a multitude of amenities in the area. As you enter, your are greeted by and open plan kitchen, which comprises of a double sink, hob, under-counter oven and space for appliances along with the connections. As you proceed further along, you will find the living area which has access to a small but private balcony. The unit has a spacious and modern full bathroom. The 2 bedrooms are airy, clean and boast built-in-cupboards.

THIS IS A GREAT INVESTMENT! CURRENTLY TENANTED with a monthly income of R6500.

Features

Interior

Bedrooms	2
Bathrooms	1
Kitchens	1
Recep. Rooms	1

Exterior

Garages	1
Carports / Parkings	2
Pool	No