



**Libuseng Lillian Mokotleng**  
 0824028574  
 libuseng@choprop.co.za



**Lucy Martha Matseba**  
 0842790300  
 lucy@choprop.co.za

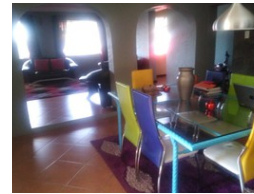
Contact Choprop Sales

012 6534444

146 Willem Botha Street  
 Wierda Park  
 0157



Web Ref RL6182



**R1,500,000**

 3  
  2  
  1

**Monthly Bond Repayment** R15,482.83  
 Calculated over 20 years at 11% with no deposit.

**Transfer Costs** R45,785.00    **Bond Costs** R28,990.00

These calculations are only a guide. Please ask your conveyancer for exact calculations.

**Monthly Rates** R500

A stunning 3 bedroom house for sale in rabie ridge

This double storey modern design offers 3 bedrooms, 2 bathroom, spacious open plan kitchen a dining room and a lounge, the bedrooms are all upstairs and has one bedroom cottage at the back for investment purposes. It can be good for investment as well as family residential home, the yard is super big for the extensions purposes and a big garage.

### Features

#### Interior

Bedrooms 3  
 Bathrooms 2  
 Furnished False

#### Exterior

Garages 1  
 Pool No

#### Sizes

Land Size 412m<sup>2</sup>