



Lucy Martha Matseba
0842790300
lucy@choprop.co.za



Libuseng Lillian Mokotleng
0824028574
libuseng@choprop.co.za

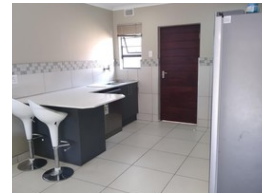
Contact Choprop Sales

012 6534444

146 Willem Botha Street
Wierda Park
0157



Web Ref RL9184



R1,700,000

 3  2  2

Monthly Bond Repayment R17,547.20
Calculated over 20 years at 11% with no deposit.

Transfer Costs R55,039.00 **Bond Costs** R30,875.00

These calculations are only a guide. Please ask your conveyancer for exact calculations.

Monthly Levy R700 **Monthly Rates** R350

3 bedroom house at clayville

3 bedroom house with beautiful marvellous build in kitchen spacious open plan lounge and dining room on your left is toilet with basin and bathroom you pass to the main bedroom on your right is another bedroom you go with passage to the main bedroom with en-suits bathroom basin and toilet is situated inside the estate security is 24 hours you open the gate with remote control

Features

Pets Allowed Yes

Interior
Bedrooms 3
Bathrooms 2
Kitchens 1
Recep. Rooms 2
Furnished Yes

Exterior
Garages 2
Carports / Parkings 5
Security Yes
Pool No

Sizes
Land Size 400m²

Extras
Paved