



Libuseng Lillian Mokotleng
0824028574
libuseng@choprop.co.za



Lucy Martha Matseba
0842790300
lucy@choprop.co.za

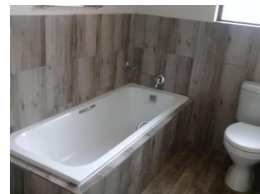
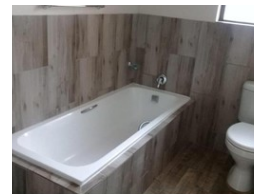
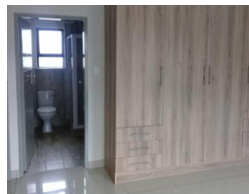
Contact Choprop Sales

0126534444
0126534444

146 Willem Botha Street
Wierda Park
0157



Web Ref RL8598



R1,560,000

 3
  2
  2

Monthly Bond Repayment R16,102.14

Calculated over 20 years at 11% with no deposit.

Transfer Costs R47,585.00 **Bond Costs** R28,990.00

These calculations are only a guide. Please ask your conveyancer for exact calculations.

Monthly Levy R900 **Monthly Rates** R500 **Special Levy** R250

3 bedroom house for sale in clayville

This beautiful family home offers 3 bedroom, main bedroom with en_suite and fitted walls, 2 bathroom with shower and a full bath. Open plan kitchen with built-in cupboards, dining room and a lounge.

It is situated in the heart of clayville in the security estate namely Parklands. The house is newly built. Call now for any information.

Features

Interior		Exterior		Sizes	
Bedrooms	3	Garages	2	Land Size	350m²
Bathrooms	2	Pool	No		
Kitchens	1				
Recep. Rooms	2				