

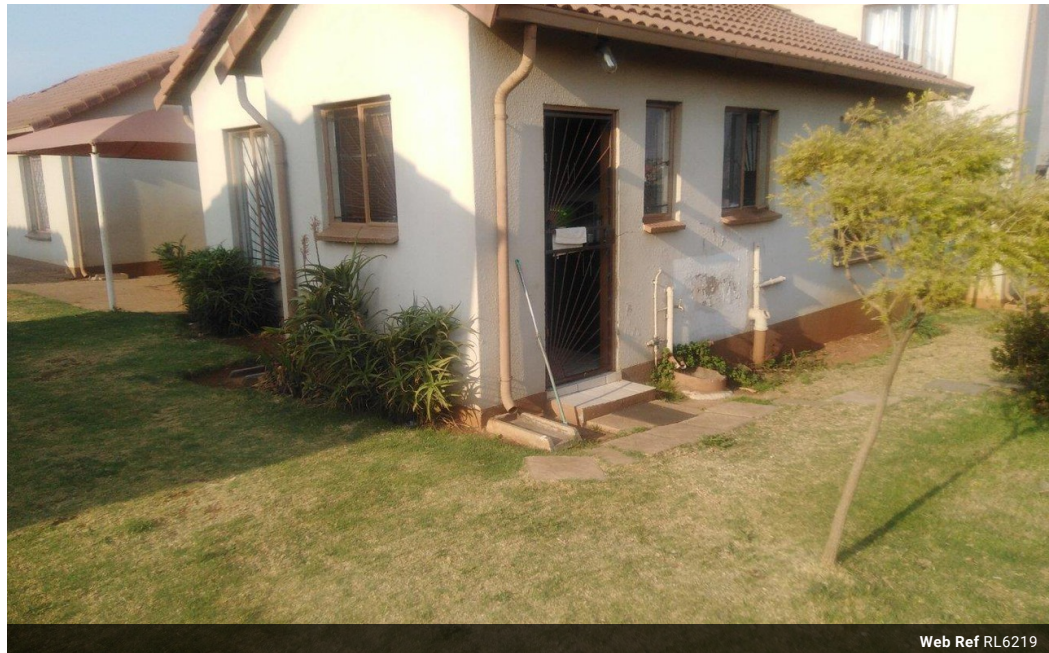


**Libuseng Lillian
Mokotleng**
 0824028574
 libuseng@choprop.co.za

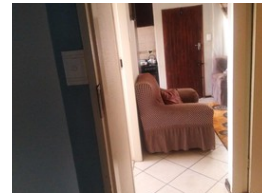
Contact Choprop Sales

012 6534444


146 Willem Botha Street
 Wierda Park
 0157



Web Ref RL6219



R670,000

 2
  1

Monthly Bond Repayment R6,915.66

Calculated over 20 years at 11% with no deposit.

Transfer Costs R23,730.00 **Bond Costs** R17,680.00

These calculations are only a guide. Please ask your conveyancer for exact calculations.

2 bedroom house for sale in clayville

It is situated inside the security estate namely clavia gardens with 2 bedroom, 1 bathroom open plan kitchen with built-in cupboards and a lounge. This house is close to amenities, shopping malls, and public schools. Call your area agent for any assistance.

Features

Interior

Bedrooms	2
Bathrooms	1
Kitchens	1

Exterior

Pool	No
------	----

Sizes

Land Size	42m ²
-----------	------------------