

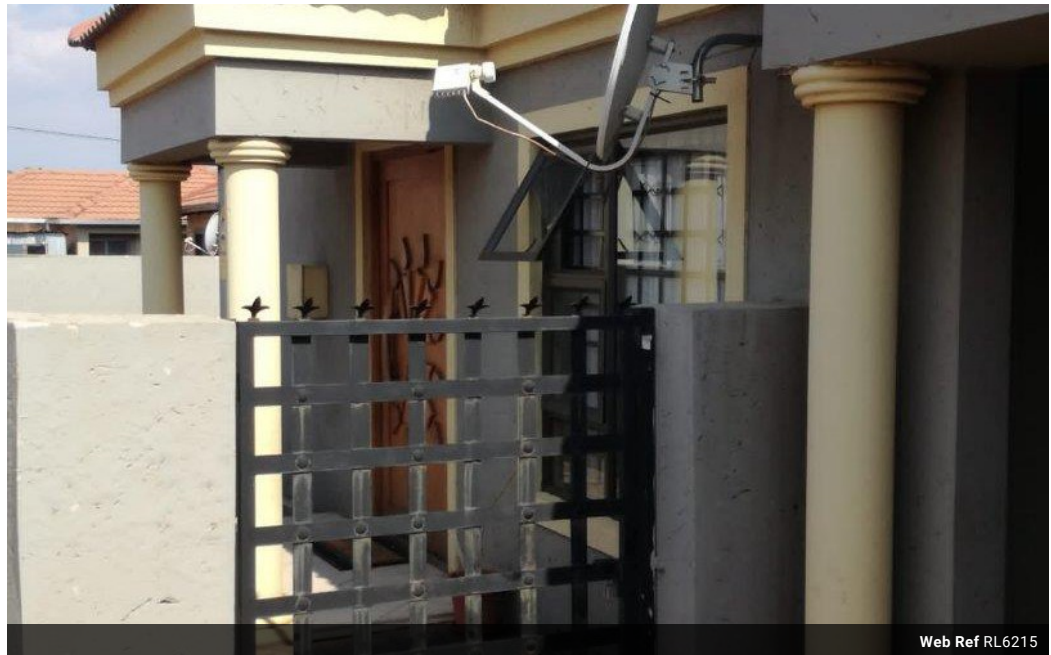


Libuseng Lillian Mokotleng
 0824028574
 libuseng@choprop.co.za

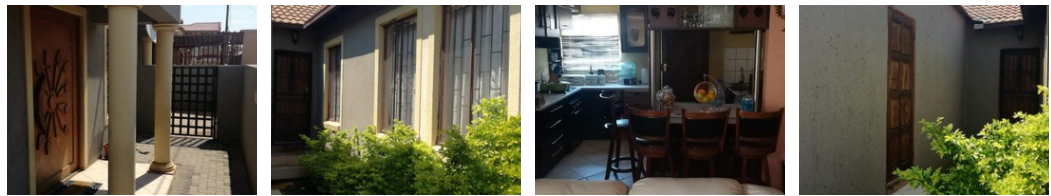
Contact Choprop Sales

012 6534444

146 Willem Botha Street
 Wierda Park
 0157



Web Ref RL6215



R960,000

 3  2

Monthly Bond Repayment R9,909.01
 Calculated over 20 years at 11% with no deposit.

Transfer Costs R30,412.00 **Bond Costs** R23,335.00
 These calculations are only a guide. Please ask your conveyancer for exact calculations.

Monthly Rates R800

3 bedroom house for sale in clayville

This family home offers 3 bedroom, 2 bathroom open plan, kitchen dining room a lounge and Double garage. It is situated near public transport and schools. The square meters is approximately 314. Call now to view this massive home. [Read less](#)

Features

| Interior | | Exterior | | Sizes | |
|-----------|-------|----------|----|-----------|-------------------|
| Bedrooms | 3 | Pool | No | Land Size | 312m ² |
| Bathrooms | 2 | | | | |
| Kitchens | 1 | | | | |
| Furnished | False | | | | |