



Libuseng Lillian Mokotleng
0824028574
libuseng@choprop.co.za



Lucy Martha Matseba
0842790300
lucy@choprop.co.za

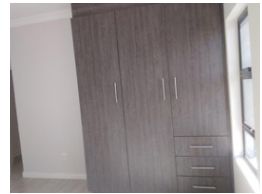
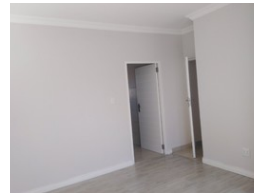
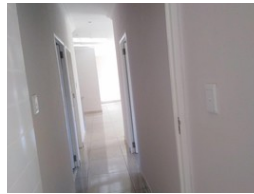
Contact Choprop Sales

012 6534444

146 Willem Botha Street
Wierda Park
0157



Web Ref RL6181



R1,600,000

 3  2

Monthly Bond Repayment R16,515.01
Calculated over 20 years at 11% with no deposit.

Transfer Costs R48,785.00 **Bond Costs** R28,990.00

These calculations are only a guide. Please ask your conveyancer for exact calculations.

Monthly Levy R800 **Monthly Rates** R800

3 bedroom house for sale in clayville

Parklands is a new security estate in clayville that gives the best security to the residents in the area. This stunning modern home offers 3 bedrooms, main bedroom with en_suite. All bedrooms are fitted, spacious open plan kitchen, dining room and a lounge. 2 bathrooms and a garage. Call your area agent for any assistance.

Features

Interior

Bedrooms	3
Bathrooms	2
Kitchens	1
Studies	1
Furnished	False

Exterior

Pool	No
------	----

Sizes

Land Size	307m ²
-----------	-------------------