



**Libuseng Lillian  
Mokotleng**  
 0824028574  
 libuseng@choprop.co.za



**Lucy Martha Matseba**  
 0842790300  
 lucy@choprop.co.za

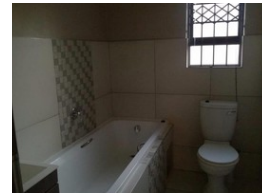
Contact Choprop Sales

012 6534444

146 Willem Botha Street  
 Wierda Park  
 0157



Web Ref RL6167



**R1,560,000**

 3   
  2   
  2

**Monthly Bond Repayment** R16,102.14  
 Calculated over 20 years at 11% with no deposit.

**Transfer Costs** R47,585.00    **Bond Costs** R28,990.00

These calculations are only a guide. Please ask your conveyancer for exact calculations.

**Monthly Levy** R800    **Monthly Rates** R800

3 bedroom house for sale in clayville parklands estate

3 spacious bedroom house for sale situated in the security estate in parklands clayville, all bedrooms with built in cupboards and a main bedroom with en suite, double garage. It welcomes with a spacious open plan a lounge, kitchen and a lounge. read less, call your area agent for any query.

## Features

### Interior

Bedrooms	3
Bathrooms	2
Kitchens	1
Recep. Rooms	2
Studies	1

### Exterior

Garages	2
Pool	No

### Sizes

Land Size	500m <sup>2</sup>
-----------	-------------------