



Libuseng Lillian Mokotleng
 0824028574
 libuseng@choprop.co.za

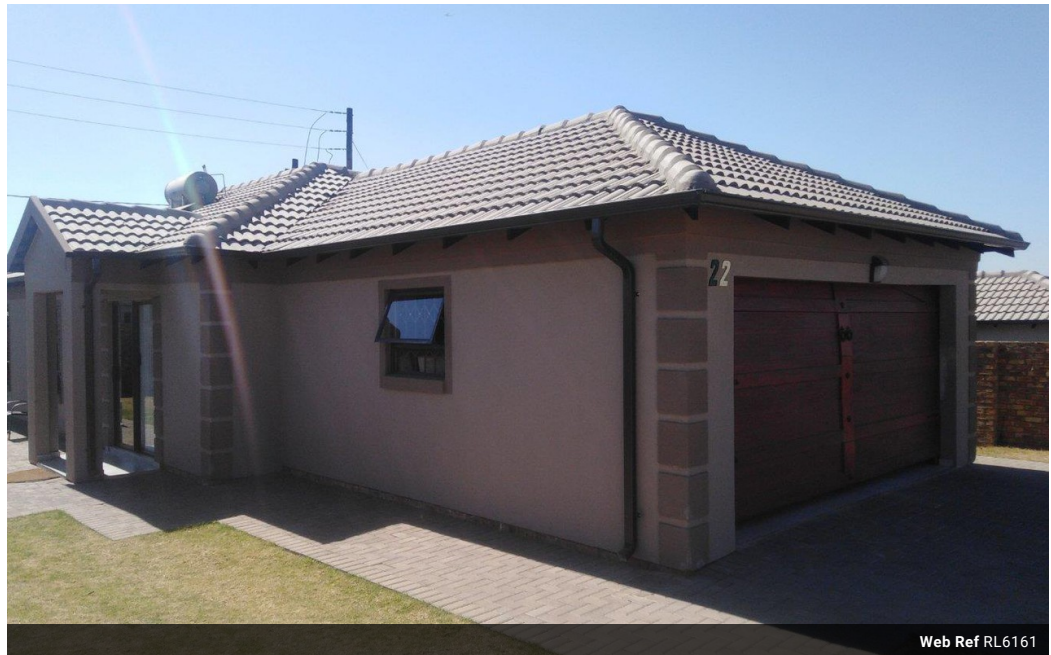


Lucy Martha Matseba
 0842790300
 lucy@choprop.co.za

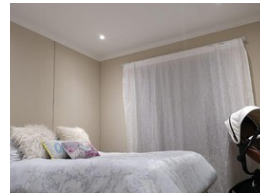
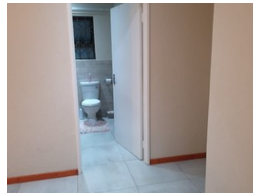
Contact Choprop Sales

012 6534444

146 Willem Botha Street
 Wierda Park
 0157



Web Ref RL6161



R1,400,000

 3  2  2

Monthly Bond Repayment R14,450.64
 Calculated over 20 years at 11% with no deposit.

Transfer Costs R40,617.00 **Bond Costs** R27,105.00

These calculations are only a guide. Please ask your conveyancer for exact calculations.

Monthly Levy R900 **Monthly Rates** R800

3 bedroom house for sale in clayville

Parkland is the new 24hr security estate in clayville, this house offers 3 spacious bedrooms, 2 bathroom, open plan dining room a lounge and a kitchen fitted. Main bedroom with en_suite. And a double garage with wooden doors automated. Call now to book for an appointment.

Features

Interior

Bedrooms 3
 Bathrooms 2
 Kitchens 1
 Furnished False

Exterior

Garages 2
 Pool No

Sizes

Land Size 267m²