



**Libuseng Lillian Mokotleng**  
0824028574  
libuseng@choprop.co.za



**Lucy Martha Matseba**  
0842790300  
lucy@choprop.co.za

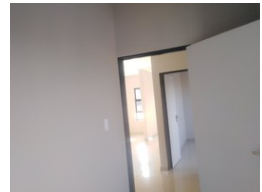
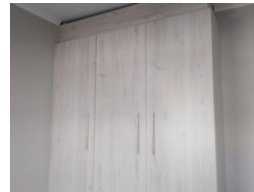
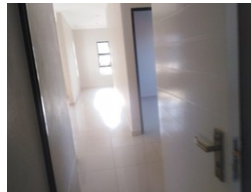
Contact Choprop Sales

012 6534444

146 Willem Botha Street  
Wierda Park  
0157



Web Ref RL6154



**R138,000**

 3  2  1

**Monthly Bond Repayment** R1,424.42  
Calculated over 20 years at 11% with no deposit.

**Transfer Costs** R10,888.00 **Bond Costs** R7,460.00

These calculations are only a guide. Please ask your conveyancer for exact calculations.

**Monthly Levy** R900 **Monthly Rates** R800

### 3 bedroom house for sale in clayville

This massive family home offers 3 bedroom, 2 bathroom, open plan kitchen and a lounge, single garage, main bedroom with en\_suite,

It is situated in the heart of clayville in the new development, clayville is next to all amenities, shopping malls, public schools, public transport and health services. Call your area agent for any assistance.

### Features

Interior		Exterior		Sizes	
Bedrooms	3	Garages	1	Land Size	1,000m <sup>2</sup>
Bathrooms	2	Pool	No		
Kitchens	1				
Recep. Rooms	1				