



**Libuseng Lillian  
Mokotleng**  
 0824028574  
 libuseng@choprop.co.za

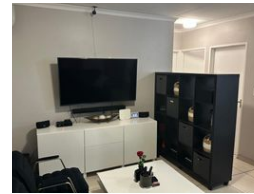
Contact Choprop Sales

012 6534444

146 Willem Botha Street  
 Wierda Park  
 0157



Web Ref RL28387



**R850,000**

 2   
  1

**Monthly Bond Repayment** R8,773.60  
 Calculated over 20 years at 11% with no deposit.

**Transfer Costs** R28,244.00    **Bond Costs** R21,450.00

These calculations are only a guide. Please ask your conveyancer for exact calculations.

### 2 bedroom house for sale in clayville

This massive family home offers 2 bedroom 1 bathroom open plan of a kitchen and a lounge. And a big parking area with a carport. The house is situated in the new development of clayville next to all amenities, shopping malls public transport and major roads leading to high way and freeways.

The security is tidy as it has cameras, paved yard and wall with a beautiful gate.

The main bedroom with built-in Cupboards. And the kitchen is fitted as well.

There is an installation of fibre.

It's a must buy property as it offers all.

Call your area agent now for more info.

### Features

#### Interior

|              |   |
|--------------|---|
| Bedrooms     | 2 |
| Bathrooms    | 1 |
| Kitchens     | 1 |
| Recep. Rooms | 1 |

#### Exterior

|                     |    |
|---------------------|----|
| Carports / Parkings | 3  |
| Pool                | No |

#### Sizes

|           |                   |
|-----------|-------------------|
| Land Size | 164m <sup>2</sup> |
|-----------|-------------------|