



Lucy Martha Matseba  
0842790300  
lucy@choprop.co.za

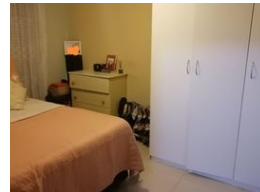
Contact Choprop Sales

0126534444  
0126534444

146 Willem Botha Street  
Wierda Park  
0157



Web Ref RL24494



**R1,150,000**

🛏 3 🚿 2

**Monthly Bond Repayment** R11,870.17

Calculated over 20 years at 11% with no deposit.

**Transfer Costs** R32,749.00 **Bond Costs** R25,220.00

These calculations are only a guide. Please ask your conveyancer for exact calculations.

**Monthly Rates** R700

### 3 Bedroom house for sale in clayville

Magnificent 3 Bedroom with modern build in kitchen to open plan lounge passage facing the main bedroom with en-suite of bathroom toilet and basin and another 2 bedrooms fitted wardrobe, quest bathroom white in colour bath basin toilet from the kitchen door you are facing bearing area at the corner , spacious garden parking spacecarport wall and gate.

### Features

**Pets Allowed** Yes

#### Interior

Bedrooms	3
Bathrooms	2
Kitchens	1
Recep. Rooms	1
Furnished	No

#### Exterior

Carports / Parkings	1
Security	No
Pool	No
Views	No

#### Sizes

Land Size	300m²
-----------	-------

#### Extras

Built-in Kitchen Appliances Built-in Wardrobes Pets Allowed Blinds Built In Braai Electric Gate  
Open Plan Tiled Floors