



Libuseng Lillian Mokotleng
0824028574
libuseng@choprop.co.za



Lucy Martha Matseba
0842790300
lucy@choprop.co.za

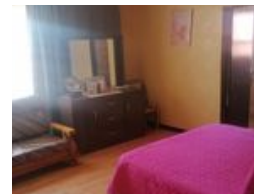
Contact Choprop Sales

012 6534444

146 Willem Botha Street
Wierda Park
0157



Web Ref RL22117



R1,300,000

 3  2  1

Monthly Bond Repayment R13,418.45
Calculated over 20 years at 11% with no deposit.

Transfer Costs R37,617.00 **Bond Costs** R27,105.00

These calculations are only a guide. Please ask your conveyancer for exact calculations.

A stunning 3 bedroom house for sale in clayville

This massive family home consists of the following
3 bedroom
2 bathroom
Open plan of a fitted kitchen, lounge and dining room

A spacious paved and neat yard
A drive through garage
All bedrooms are fitted with modern wooden Cupboards and wooden floors.
Main bedroom with en suite

It is situated in the heart of clayville next to all amenities

Shopping malls
Public transport
Private facilities
Its a corner house with lots of potential

Features

Pets Allowed Yes

Interior
Bedrooms 3
Bathrooms 2
Kitchens 1
Recep. Rooms 2.5

Exterior
Garages 1
Carports / Parkings 2
Pool No

Sizes
Land Size 250m²