



Libuseng Lillian Mokotleng
0824028574
libuseng@choprop.co.za



Lucy Martha Matseba
0842790300
lucy@choprop.co.za

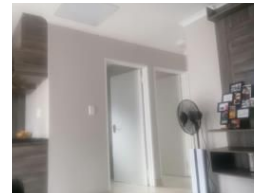
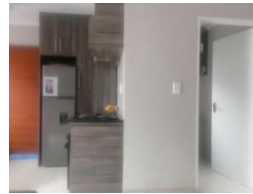
Contact Choprop Sales

012 6534444

146 Willem Botha Street
Wierda Park
0157



Web Ref RL16870



R790,000

 2  1

Monthly Bond Repayment R8,154.29

Calculated over 20 years at 11% with no deposit.

Transfer Costs R25,898.00 **Bond Costs** R19,565.00

These calculations are only a guide. Please ask your conveyancer for exact calculations.

2 bedroom house for sale in clayville

This massive family home situated in the covinient location,next to public transport, It offers 2 bedroom open plan of a kitchen and a lounge ,separate bath and toilet.and a huge space of parking. Its a newly build house with kitchen fitted and the main bedroom. Call your area agent for more info

Features

Pets Allowed	Yes				
Interior		Exterior		Sizes	
Bedrooms	2	Pool	No	Land Size	161m ²
Bathrooms	1				
Kitchens	1				
Recep. Rooms	1				