



**Libuseng Lillian Mokotleng**  
0824028574  
libuseng@choprop.co.za



**Lucy Martha Matseba**  
0842790300  
lucy@choprop.co.za

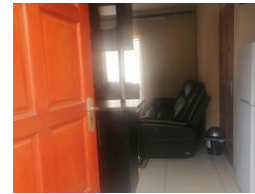
Contact Choprop Sales

012 6534444

146 Willem Botha Street  
Wierda Park  
0157



Web Ref RL14184



**R750,000**

 2  2

**Monthly Bond Repayment** R7,741.41  
Calculated over 20 years at 11% with no deposit.

**Transfer Costs** R25,898.00 **Bond Costs** R19,565.00  
These calculations are only a guide. Please ask your conveyancer for exact calculations.

### 2 bedroom house for sale in clayville

Corner stand property just renovated with lots of opportunities. It offers 2 bedroom 1 bathroom combined with toilet, open plan of a kitchen and a lounge and a big parking area that can accommodate up to 3 cars.

It is situated in the new development development of clayville ext and next to all amenities, shopping malls schools, hospitals and public transport.

The kitchen is fitted with modern wooden built in Cupboards and both the bedrooms. The floor is well tiled with porcelain. This is a less maintenance property as it has just been renovated.

Call your property consultant for the area for more info.

### Features

<b>Pets Allowed</b>	Yes			
<b>Interior</b>		<b>Exterior</b>		<b>Sizes</b>
Bedrooms	2	Carports / Parkings	3	Land Size
Bathrooms	2	Pool	No	126m <sup>2</sup>
Kitchens	1			
Recep. Rooms	1			