



Libuseng Lillian Mokotleng
0824028574
libuseng@choprop.co.za



Lucy Martha Matseba
0842790300
lucy@choprop.co.za

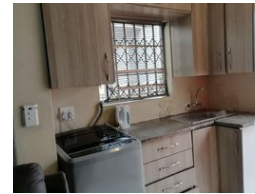
Contact Choprop Sales

0126534444
0126534444

146 Willem Botha Street
Wierda Park
0157



Web Ref RL11787



R950,000

 2  1

Monthly Bond Repayment R9,805.79

Calculated over 20 years at 11% with no deposit.

Transfer Costs R30,412.00 **Bond Costs** R23,335.00

These calculations are only a guide. Please ask your conveyancer for exact calculations.

2 bedroom house for sale with 2 cottages outside

2 bedroom house for sale with 2 cottages outside with an income of 5000 per month
It is situated in the new development of clayville ext next to curro academy of learning.
The main house offers 2 bed 1 bath open plan of a fitted kitchen and lounge.
All bedrooms with built in cupboards and modern bath with granite tiles on the walls.
Don't miss it out as it offers all.

Features

Interior		Exterior		Sizes	
Bedrooms	2	Pool	No	Land Size	161m ²
Bathrooms	1				
Kitchens	1				
Recep. Rooms	1				