



**Libuseng Lillian  
Mokotleng**  
0824028574  
libuseng@choprop.co.za



**Lucy Martha Matseba**  
0842790300  
lucy@choprop.co.za

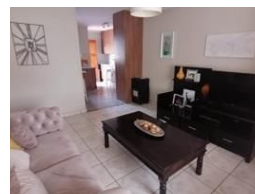
Contact Choprop Sales

0126534444  
0126534444

146 Willem Botha Street  
Wierda Park  
0157



Web Ref RL11603



**R1,150,000**

3 2 2

**Monthly Bond Repayment** R11,870.17

Calculated over 20 years at 11% with no deposit.

**Transfer Costs** R32,749.00 **Bond Costs** R25,220.00

These calculations are only a guide. Please ask your conveyancer for exact calculations.

A stunning 3 bedroom house for sale in clayville

It is situated in the heart of clayville in the quietest location,  
This massive family home offers 3 bedroom 2 bathroom open plan of a lounge and kitchen,you can enter the house either in the kitchen or at the front door with large wooden swing door.  
Entering at the front you walk through the spacious living room into the kitchen area.  
The kitchen has wooden cupboards with an undercounter stove with hob,

## Features

### Interior

Bedrooms	3
Bathrooms	2
Kitchens	1
Recep. Rooms	1

### Exterior

Garages	2
Carports / Parkings	2
Pool	No

### Sizes

Land Size	215m²
-----------	-------