



**Libuseng Lillian Mokotleng**  
 0824028574  
 libuseng@choprop.co.za



**Lucy Martha Matseba**  
 0842790300  
 lucy@choprop.co.za

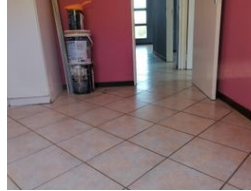
Contact Choprop Sales

012 6534444

146 Willem Botha Street  
 Wierda Park  
 0157



Web Ref RL11558



**R980,000**



**Monthly Bond Repayment** R10,115.45  
 Calculated over 20 years at 11% with no deposit.

**Transfer Costs** R30,412.00    **Bond Costs** R23,335.00  
 These calculations are only a guide. Please ask your conveyancer for exact calculations.

### 3 bedroom house for sale in clayville

This stunning property is situated in a massive stand size in clayville, it offers 3 bedroom, 1 bathroom open plan of a kitchen and lounge.

It is closest of all amenities, shopping malls, public schools and hospital, clayville is a convenient area closest to johannesburg, pretoria and kempston. Its has an opportunity to invest as well as it has a spacious stand to extend the building, call now to book for an appointment.

### Features

#### Interior

Bedrooms	3
Bathrooms	1
Kitchens	1
Recep. Rooms	2

#### Exterior

Carports / Parkings	2.5
Pool	No

#### Sizes

Land Size	250m <sup>2</sup>
-----------	-------------------