



Lucy Martha Matseba
0842790300
lucy@choprop.co.za



Libuseng Lillian Mokotleng
0824028574
libuseng@choprop.co.za

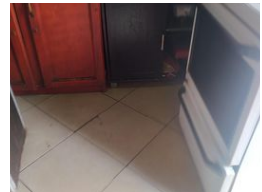
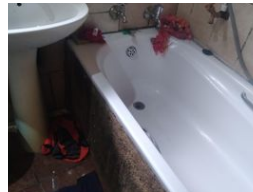
Contact Choprop Sales

012 6534444

146 Willem Botha Street
Wierda Park
0157



Web Ref RL10494



R900,000

 2  2  1

Monthly Bond Repayment R9,289.70

Calculated over 20 years at 11% with no deposit.

Transfer Costs R28,244.00 **Bond Costs** R21,450.00

These calculations are only a guide. Please ask your conveyancer for exact calculations.

Monthly Rates R300

2 bedroom house for sale at clayville

2 bedroom house lounge kitchen 5 outside room garage wall and gate

Features

Pets Allowed Yes

Interior

Bedrooms	2
Bathrooms	2
Kitchens	1
Recep. Rooms	1
Furnished	Yes

Exterior

Garages	1
Carports / Parkings	5
Security	Yes
Pool	No
Views	Yes

Sizes

Land Size	250m ²
-----------	-------------------

Extras

5 rooms outside toilet