



**Libuseng Lillian  
Mokotleng**  
0824028574  
libuseng@choprop.co.za

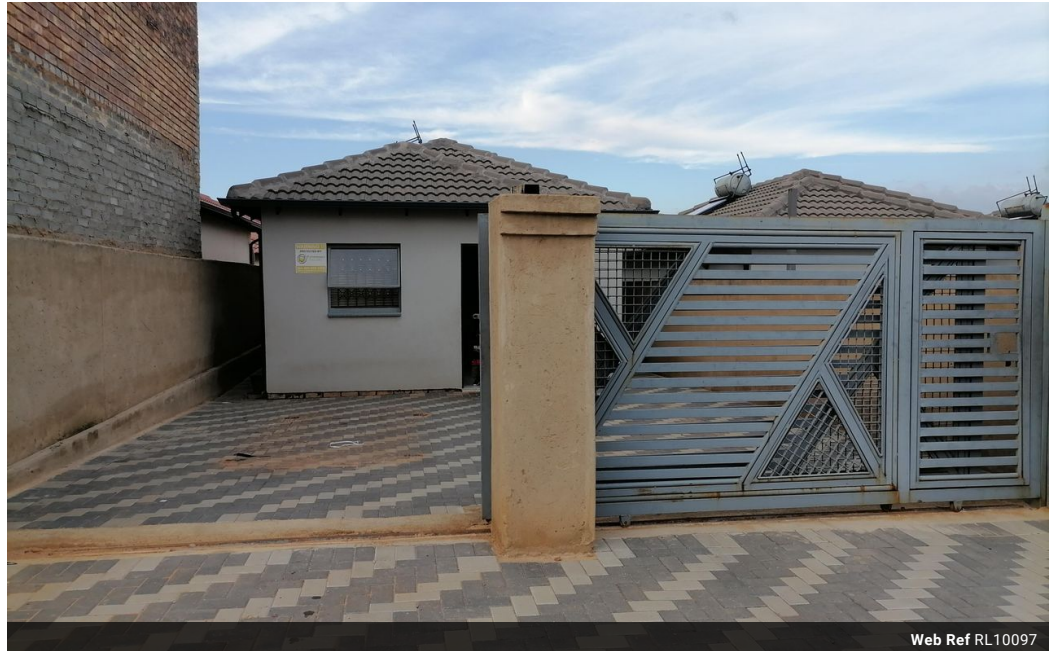


**Lucy Martha Matseba**  
0842790300  
lucy@choprop.co.za

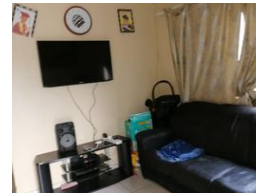
Contact Choprop Sales

0126534444  
0126534444

146 Willem Botha Street  
Wierda Park  
0157



Web Ref RL10097



**R700,000**

 2  1

**Monthly Bond Repayment** R7,225.32

Calculated over 20 years at 11% with no deposit.

**Transfer Costs** R23,730.00 **Bond Costs** R17,680.00

These calculations are only a guide. Please ask your conveyancer for exact calculations.

## 2 bedroom house for sale in clayville

It is situated in the new development in ext 45 clayville, this family home is good for new family who wanna start up, it offers 2 bedroom 1 bathroom open plan a kitchen and a lounge. It is situated near curro academy of learning.

Closest to public routes and public hospitals. Don't miss this out call your area agent now

## Features

Interior		Exterior		Sizes	
Bedrooms	2	Pool	No	Land Size	165m²
Bathrooms	1				
Kitchens	1				
Recep. Rooms	1				