

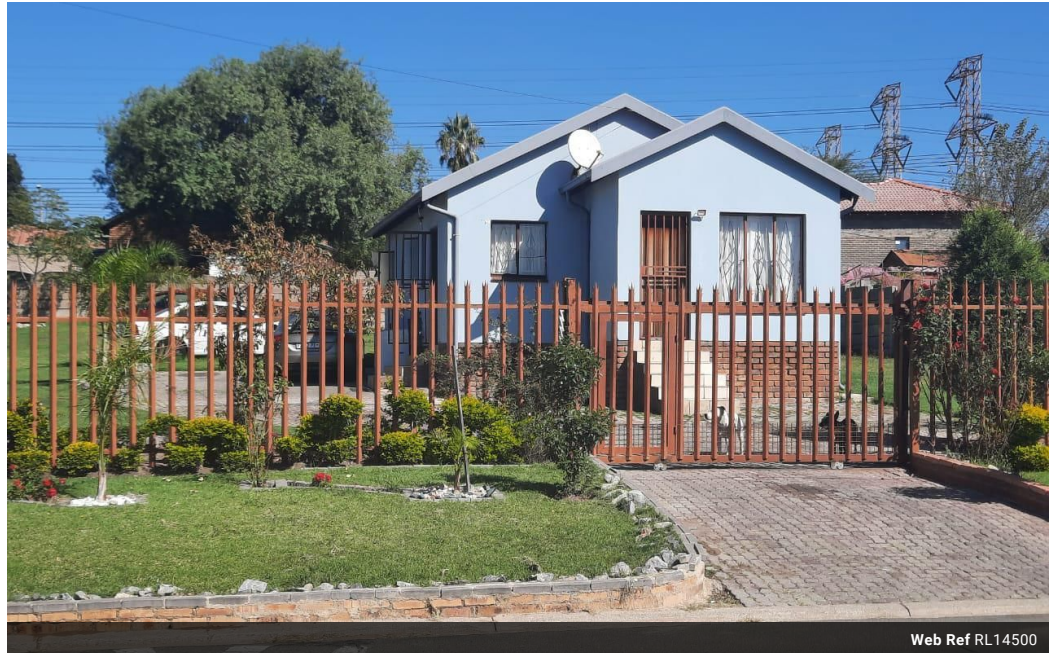


Ntombi Mabaso
078 521 2534
ntombi@choprop.co.za

Contact Choprop Sales

012 6534444

146 Willem Botha Street
Wierda Park
0157



Web Ref RL14500



R1,300,000

 2  1

Monthly Bond Repayment R13,418.45
Calculated over 20 years at 11% with no deposit.

Transfer Costs R37,617.00 **Bond Costs** R27,105.00
These calculations are only a guide. Please ask your conveyancer for exact calculations.

Cozy 2bed house on a BIG parcel of land in the heart of Norkem Park

This house is built on a huge parcel of land. It features a great kitchen, sitting room, a huge master bedroom fitted with beautiful solid cupboards and a second bedroom. The land outside can be used to erect more structures or extra buildings. The yard is well maintained with a huge beautiful garden space for planting veggies. Come and see what you can do with this huge parcel of land.

Features

| Interior | | Exterior | | Sizes | |
|--------------|---|----------|----|-----------|---------------------|
| Bedrooms | 2 | Pool | No | Land Size | 1,027m ² |
| Bathrooms | 1 | | | | |
| Kitchens | 1 | | | | |
| Recep. Rooms | 2 | | | | |