



**Libuseng Lillian Mokotleng**  
0824028574  
libuseng@choprop.co.za



**Lucy Martha Matseba**  
0842790300  
lucy@choprop.co.za

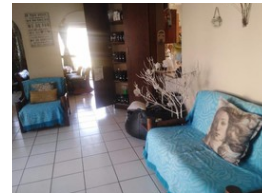
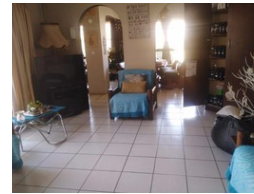
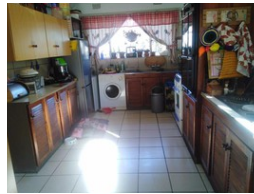
Contact Choprop Sales

012 6534444

146 Willem Botha Street  
Wierda Park  
0157



Web Ref RL6169



**R1,500,000**

 3  2  1

**Monthly Bond Repayment** R15,482.83  
Calculated over 20 years at 11% with no deposit.

**Transfer Costs** R45,785.00 **Bond Costs** R28,990.00

These calculations are only a guide. Please ask your conveyancer for exact calculations.

**Monthly Rates** R800

A family house for sale in birchleigh north

This stunning property offers 3 bedroom .2 bathroom,open plan dining room and a lounge ,a garage and a spacious yard of approximately 994 sqm ,the property can be used for investment as well as residential,its an ideal home that cannot be missed.call now to secure appointment.

### Features

#### Interior

Bedrooms	3
Bathrooms	2
Kitchens	1
Studies	2
Furnished	False

#### Exterior

Garages	1
Pool	No

#### Sizes

Land Size	994m <sup>2</sup>
-----------	-------------------