



Nadia Chetty
0797799222
nadia@choprop.co.za

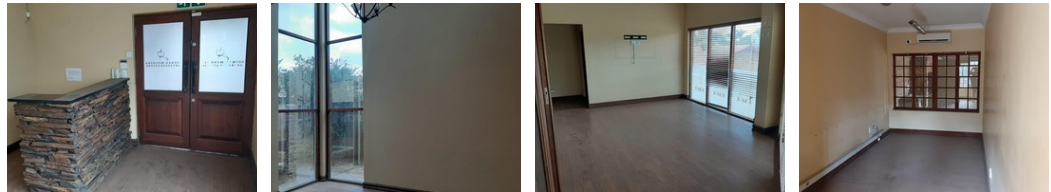
Contact Choprop Sales

012 6534444



146 Willem Botha Street
Wierda Park
0157



Web Ref RL7879



R3,000,000

 20  4

Monthly Bond Repayment R30,965.65
Calculated over 20 years at 11% with no deposit.

Transfer Costs R160,211.00 **Bond Costs** R42,185.00
These calculations are only a guide. Please ask your conveyancer for exact calculations.

Monthly Rates R2,000

PRIME POSITION 20-ROOM PROPERTY FOR SALE IN WIERDA PARK

A PROPERTY THAT REINVENTS ITSELF!

Situated on a corner stand close to major access routes, schools and shopping centre, this prime-position property with adaptable living space is priced to go!

Currently zoned "residential", the property has 20 rooms which with minor modification can be converted into bedrooms. There are also 2 kitchens, one on the ground floor and the second on the top floor. There are 4 bathrooms on the property and ample parking space.

The living areas are versatile and lend themselves well to a myriad of uses, and limitless potential.

Features

Pets Allowed	Yes				
Interior		Exterior		Sizes	
Bedrooms	20	Pool	No	Floor Size	800m ²
Bathrooms	4			Land Size	1,140m ²
Kitchens	2				
Recep. Rooms	4				
Studies	1				