



**Armaan Essa**  
0828088886  
armaan@choprop.co.za

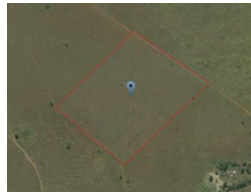
Contact Choprop Sales

0126534444  
0126534444

146 Willem Botha Street  
Wierda Park  
0157



Web Ref RL8547



**R1,990,000**

**Monthly Bond Repayment** R20,540.55

Calculated over 20 years at 11% with no deposit.

**Transfer Costs** R74,606.00      **Bond Costs** R32,760.00

These calculations are only a guide. Please ask your conveyancer for exact calculations.

### LARGE PIECE OF VACANT LAND ON THE M26 BACK ROAD OF ERASMIA!

A beautiful piece of vacant land just ideal for any development or agricultural use. Situated on the back road of Erasmia this land draws a lot of passing traffic and can be perfect for any developer.

The land size measures a whopping 5.7 hectares and is priced to sell!

Mooiplaats is a neighboring agricultural and farming area.

Call today to make your offer!!

### Features