



Armaan Essa
0828088886
armaan@choprop.co.za

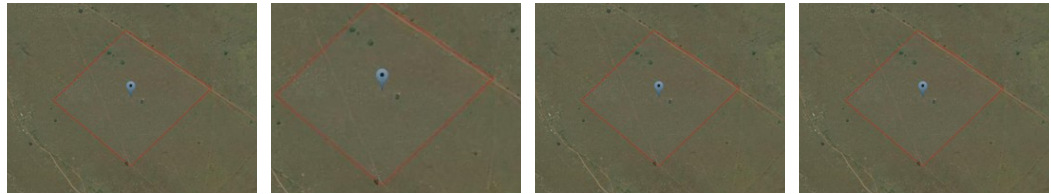
Contact Choprop Sales

012 6534444

146 Willem Botha Street
Wierda Park
0157



Web Ref RL8545



R1,995,000

Monthly Bond Repayment R20,592.16
Calculated over 20 years at 11% with no deposit.

Transfer Costs R74,906.00 **Bond Costs** R32,760.00
These calculations are only a guide. Please ask your conveyancer for exact calculations.

LARGE AND VOLUMINOUS VACANT LAND IDEAL FOR DEVELOPMENT! ERASMIA!
MOOIPLAATS!

A beautiful piece of vacant land just ideal for any development or agricultural use. Situated on the back road of Erasmia this land draws a lot of passing traffic and can be perfect for any developer. The land size measures a whopping 5.72 hectares and is priced to sell!! Mooiplaats is a neighboring agricultural and farming area. Call today to make your offer!!

Features