



Armaan Essa  
0828088886  
armaan@choprop.co.za

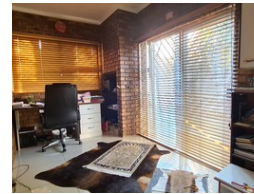
Contact Choprop Sales

0126534444  
0126534444

146 Willem Botha Street  
Wierda Park  
0157



Web Ref RL9284



**R1,345,000**

 3  2

**Monthly Bond Repayment** R13,882.93

Calculated over 20 years at 11% with no deposit.

**Transfer Costs** R38,967.00 **Bond Costs** R27,105.00

These calculations are only a guide. Please ask your conveyancer for exact calculations.

**Monthly Rates** R650

### COZY FAMILY HOME WITH VAST LAND FOR ANY DEVELOPMENT POTENTIAL!

A face brick exterior with a cape dutch style meets the eye to this attractive home.

A vast array of flat land surrounding before you enter the lovely spacious home.

Enter from a covered cosy patio into the entrance hall and a brightly spacious lounge to the left.

The open plan dining hall and kitchen is just up ahead with an anthracite fireplace strategically placed to bring warmth to the entire home.

The kitchen is fitted with granite tops and ample cupboards. To the left is a study/office room with a door leading outside for easy access for an at home office.

The 3 bedrooms are wide and spacious, all fitted with built-in cupboards and attract alot of natural sunlight.

There are 2 bedrooms that come with a dressing room and en-suite. The 2nd en-suite also serves as the common bathroom.

The home also comes with an...

### Features

#### Interior

Bedrooms	3
Bathrooms	2
Kitchens	1
Recep. Rooms	2
Studies	1

#### Exterior

Carports / Parkings	2
Dom. Accom.	1
Pool	No

#### Sizes

Floor Size	260m <sup>2</sup>
Land Size	950m <sup>2</sup>