

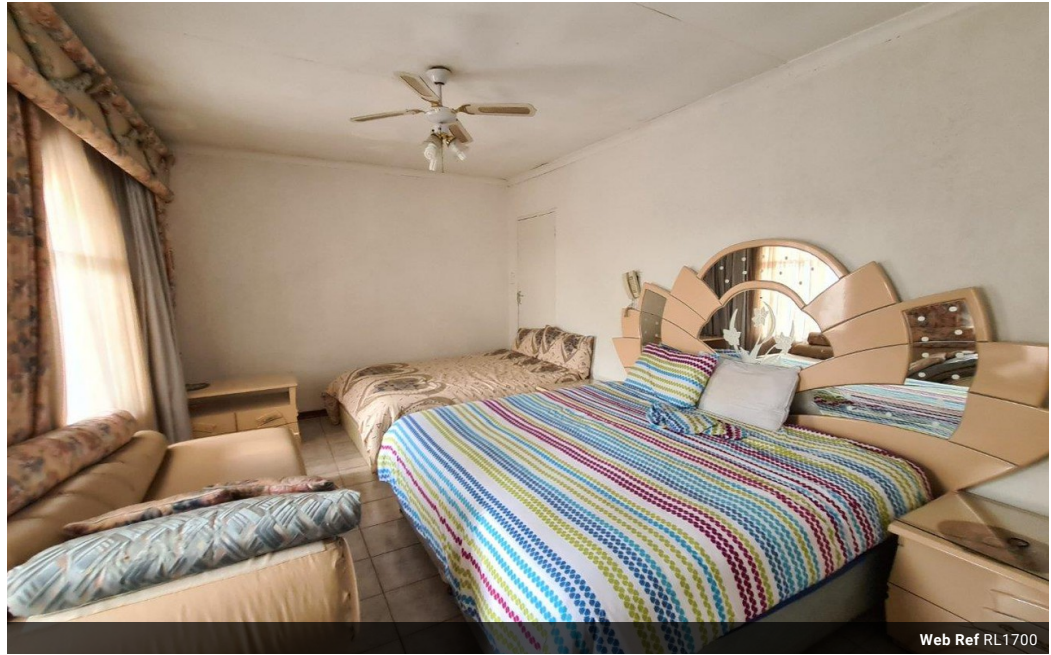


**Armaan Essa**  
0828088886  
armaan@choprop.co.za

Contact Choprop Sales

012 6534444

146 Willem Botha Street  
Wierda Park  
0157



Web Ref RL1700



**R2,795,000**

 7  5  1

**Monthly Bond Repayment** R28,849.67  
Calculated over 20 years at 11% with no deposit.

**Transfer Costs** R141,487.00 **Bond Costs** R40,300.00  
These calculations are only a guide. Please ask your conveyancer for exact calculations.

**Monthly Rates** R600

COLOSSAL AND ARCHITECTURAL DELIGHT THAT IS PERFECT AS AN INVESTMENT OR FOR THE LARGE FAMILIES SEEKIN

A beautiful and delightful home boasting not only space but also comfort. An attractive exterior with mirror finishes and cladding greets you from the street front. The double automated garage is on the right with one being a drive through to the back which allows for a further 3 cars parking. The main entrance leads into a spectacular spacious and double volume entrance hall with a spiral wooden staircase to the left. On the first level of the home straight ahead you have the guest lounge to the right and then the voluminous formal lounge with a sliding door leading outside to a cozy patio. The large dining hall and kitchen are next to each other with the kitchen traditionally fitted with brass taps and granite tops. There is also a scullery and pantry. The passage leads to the two fully fitted downstairs bedrooms, with...

Features

Interior		Exterior		Sizes	
Bedrooms	7	Garages	1	Floor Size	704m <sup>2</sup>
Bathrooms	5	Pool	No	Land Size	550m <sup>2</sup>
Kitchens	2				
Furnished	False				