



Armaan Essa
0828088886
armaan@choprop.co.za

Contact Choprop Sales

012 6534444

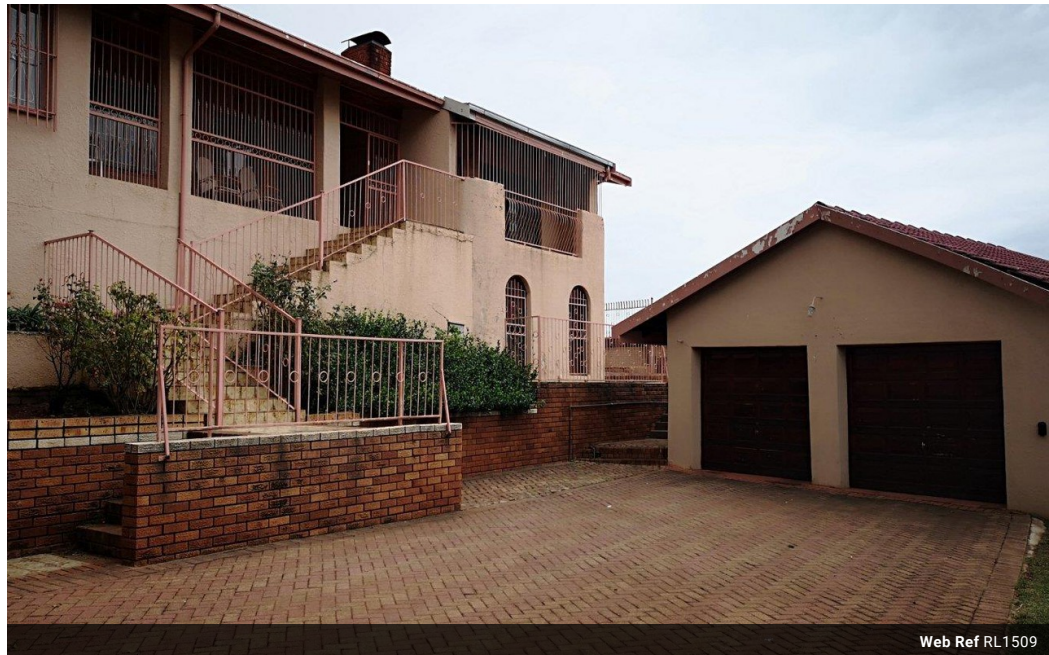
146 Willem Botha Street
Wierda Park
0157

Make an Offer

Market value
R1,795,000

Offers from
R1,750,000

Offers for this listing must be made in R25,000 increments



Web Ref RL1509



R1,795,000

 3
  2
  1

Monthly Bond Repayment R18,527.78
Calculated over 20 years at 11% with no deposit.

Transfer Costs R60,739.00 **Bond Costs** R30,875.00

These calculations are only a guide. Please ask your conveyancer for exact calculations.

Monthly Rates R711

VIEW FROM THE TOP! BREATHTAKING FAMILY HOME WITH THE MOST SPECTACULAR VIEWS! SUPER SPACIOUS LAND WIT

Ever wondered how is the view from the top? With the coolness of fresh air and the lovely fresh breezes. Now you can have just that feeling and yes for everyday, in your dream family home. Up for grabs is this colossal and spacious 3 bedroom, 2 bath home. A beautiful masterpiece awaits you with a long paved driveway, a double garage to the right. A staircase leads to the main entrance hall and the palatial lounge is to the right. A balcony that opens up with trellis gates, gives you that amazing, awe-inspiring view of the suburb and beyond. The lounge is also complimented by a rustic fireplace. The dining hall is also alongside which also offers a balcony with the side view. A large kitchen which is every home executives dream with all the cupboards and space, also has a back entrance, which is totally user friendly for...

Features

Pets Allowed Yes

Interior

Bedrooms	3
Bathrooms	2
Recep. Rooms	1
Studies	1

Exterior

Garages	1
Security	Yes
Pool	No

Sizes

Floor Size	339m ²
Land Size	1,200m ²