



Armaan Essa
0828088886
armaan@choprop.co.za

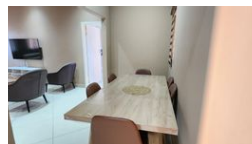
Contact Choprop Sales

0126534444
0126534444

146 Willem Botha Street
Wierda Park
0157



Web Ref RL13438



R1,500,000

 7  8

Monthly Bond Repayment R15,482.83

Calculated over 20 years at 11% with no deposit.

Transfer Costs R45,785.00 **Bond Costs** R28,990.00

These calculations are only a guide. Please ask your conveyancer for exact calculations.

Monthly Rates R820

INVESTMENT OR JUST PERFECT AS A 3 PART FAMILY HOME! HIGH INCOME POTENTIAL! LAUDIUM!

BARGAIN

This property is an ideal as a investment potential or a perfect extended family home. It comprises of 3 separate sections with their own entrances.

Section 1

3 bedrooms, 4 bathrooms, a kitchen, open plan lounge & dining area. All bedrooms are en-suite, tiled and come with fitted built-in cupboards.

Section 2

3 bedrooms, 3 bathrooms and a guest toilet. A fitted kitchen and lounge. This section is also fully tiled.

Section 3

1 bedroom, open plan lounge and kitchen with 1 bathroom.

All 3 units have prepaid electricity meters, making it very practical as an investment unit. Rental income is of a high return.

Features

Interior

Bedrooms	7
Bathrooms	8
Kitchens	3
Recep. Rooms	5

Exterior

Carports / Parkings	5
Pool	No

Sizes

Floor Size	350m ²
Land Size	515m ²