



Armaan Essa
0828088886
armaan@choprop.co.za

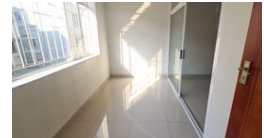
Contact Choprop Sales

012 6534444

146 Willem Botha Street
Wierda Park
0157



Web Ref RL11209



R895,000

 2  1.5  1

Monthly Bond Repayment R9,238.09
Calculated over 20 years at 11% with no deposit.

Transfer Costs R28,244.00 **Bond Costs** R21,450.00

These calculations are only a guide. Please ask your conveyancer for exact calculations.

Monthly Levy R1,386 **Monthly Rates** R160

SUPER NEAT AND SUPER MODERN! CENTRAL LAUDIUM!

A perfect buy for the buyer who needs to be near the CBD and wants the modern lifestyle.

This is a super neat and modern flat that boasts porcelain tiles, and extravagant finishes.

The kitchen is fitted with granite tops and a breakfast granite table with lots of cupboards.

The main bedroom is spacious and has plenty of cupboard space. Brightness and serene ambiance is an attractive feature to this apartment.

The added value and bonus that this flat offers is also a double automated garage. The garages can also be used as a business premises, since it also comes with glass sliding doors.

An additional open parking is also included.

Features

Interior

Bedrooms	2
Bathrooms	1.5
Kitchens	1
Recep. Rooms	2

Exterior

Garages	1
Carports / Parkings	1
Pool	No

Sizes

Floor Size	75m ²
Land Size	3,683m ²