

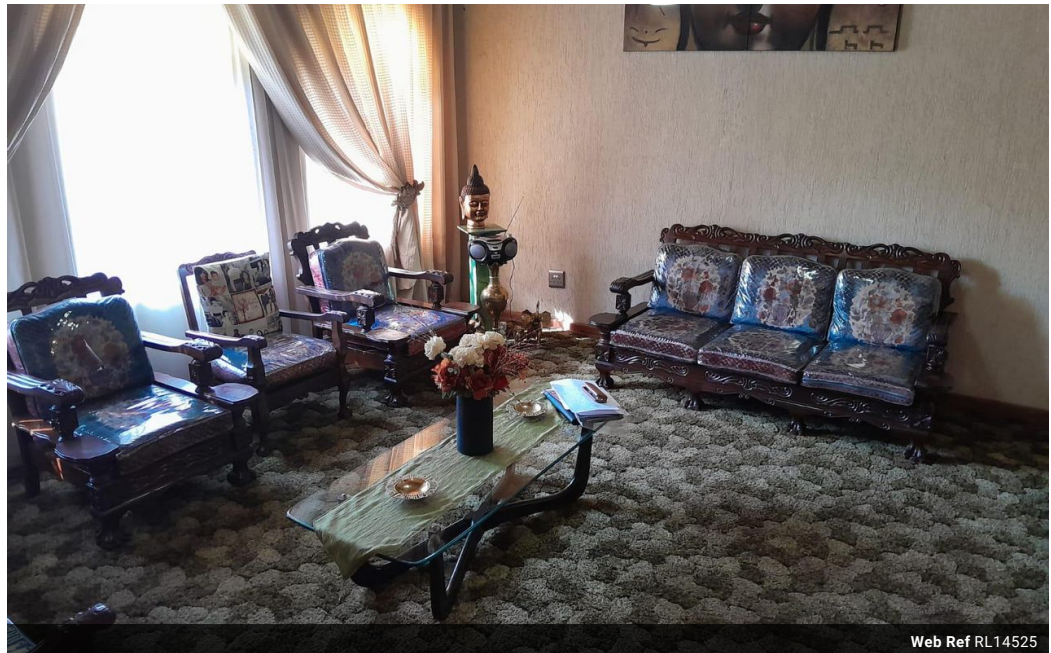


Vani Chatty  
0842649556  
vani@choprop.co.za

Contact Choprop Sales

0126534444  
0126534444

146 Willem Botha Street  
Wierda Park  
0157



Web Ref RL14525



**R1,304,000**

**Monthly Bond Repayment** R13,459.74  
Calculated over 20 years at 11% with no deposit.

**Transfer Costs** R37,737.00    **Bond Costs** R27,105.00  
These calculations are only a guide. Please ask your conveyancer for exact calculations.

 3     1     2

**Ready For Immediate Occupation**

Need a home to stay. Don't have time for renovations! This is a home for you. Well kept, perfect to move in right away as no maintenance needed. Meticulous attention to detail, laminated and tiled flooring and lots of spacious north facing bedrooms. all with fitted built in cupboards, you won't need to change a thing! This is the ultimate "just-move-in" kind of home.

All bedrooms are well lit throughout the day, they all have built-in-cupboards, the master bedroom is ensuite leading to a magnificently finished, full bathroom.

A sunken large lounge, leading to the dining room and a kitchen with fitted kitchen units. The kitchen leads out to a large back yard with ample space. Ideal to open a workshop. There is direct access to the double garage which has a small storeroom, and ample parking for visitors or additional...

**Features**

Interior		Exterior		Sizes	
Bedrooms	3	Garages	2	Land Size	667m <sup>2</sup>
Bathrooms	1	Security	Yes		
Kitchens	1	Pool	No		
Recep. Rooms	2				