

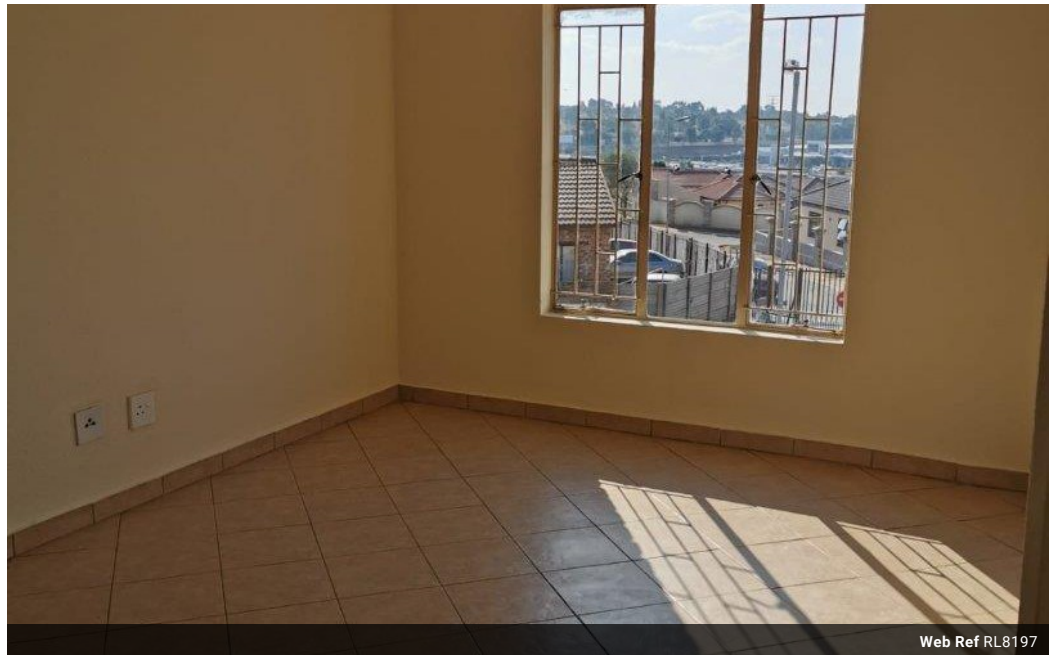


Hlamalani Suprise Chauke
 0710339843
 hlamalani@choprop.co.za

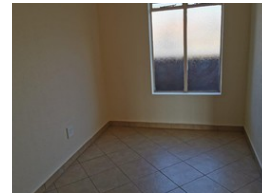
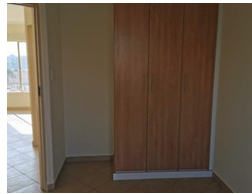
Contact Choprop Sales

012 6534444

146 Willem Botha Street
 Wierda Park
 0157



Web Ref RL8197



R675,000

 2  1

Monthly Bond Repayment R6,967.27
 Calculated over 20 years at 11% with no deposit.

Transfer Costs R23,730.00 **Bond Costs** R17,680.00
 These calculations are only a guide. Please ask your conveyancer for exact calculations.

Monthly Levy R1,200 **Monthly Rates** R250

It is time to buy!!!!!!

Secured new development estate, situated in Kosmosdal Centurion. Lavender lane is just 5km from N1.

It offers 2 bedrooms, 1 full bathroom, car port. Unit size 54m2.

The estate has swimming pool, club house, tennis court and playground for kids.

There are No transfer and bond registration cost.

20 units available. Call me and make appointments for viewing.

Features

| Interior | | Exterior | | Sizes | |
|-----------|-------|----------|----|-----------|------------------|
| Bedrooms | 2 | Pool | No | Land Size | 54m ² |
| Bathrooms | 1 | | | | |
| Kitchens | 1 | | | | |
| Furnished | False | | | | |