



**Sivanandan  
Govindasamy Packary**  
 0824920583  
 siva@choprop.co.za

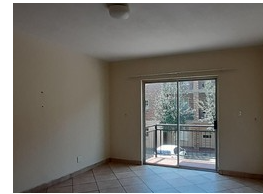
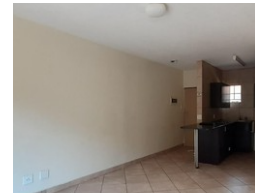
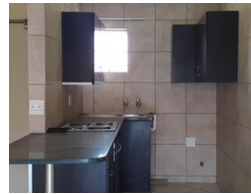
Contact Choprop Sales

012 6534444

146 Willem Botha Street  
 Wierda Park  
 0157



Web Ref RL11014



**R655,000**



**Monthly Bond Repayment** R6,760.83  
 Calculated over 20 years at 11% with no deposit.

**Transfer Costs** R23,730.00    **Bond Costs** R17,680.00

These calculations are only a guide. Please ask your conveyancer for exact calculations.

**Monthly Levy** R1,400    **Monthly Rates** R383

Calling all investors and first time buyers !!!

Make this investment opportunity yours to own today!!!

This neat and cozy apartment offers an inviting ambiance as you step into the expansive open-plan living areas, seamlessly extending to a balcony that boasts a beautiful view. The spacious kitchen, designed with modern convenience in mind, features ample cupboard space, granite countertops, a breakfast nook, and a tiled finish. There's also room for your essential electrical appliances and a built-in stove, making it both functional and stylish.

As you move down the passage, you'll find two generously sized bedrooms, both equipped with built-in cupboards and tiled flooring. These bedrooms share a well-appointed, tiled bathroom. The apartment also includes one covered parking space, with plenty of additional visitors' parking available. Currently, the property is...

## Features

### Interior

Bedrooms	2
Bathrooms	1
Kitchens	1
Recep. Rooms	2
Furnished	No

### Exterior

Carports / Parkings	1
Security	Yes
Pool	Yes
Views	Yes

### Sizes

Floor Size	57m <sup>2</sup>
------------	------------------