



Sivanandan
Govindasamy Packary
0824920583
siva@choprop.co.za

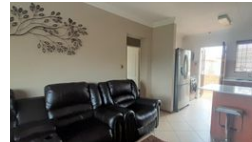
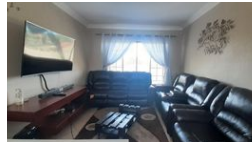
Contact Choprop Sales

012 6534444

146 Willem Botha Street
Wierda Park
0157



Web Ref RL10211



R793,000

 2  2

Monthly Bond Repayment R8,185.25
Calculated over 20 years at 11% with no deposit.

Transfer Costs R25,898.00 **Bond Costs** R19,565.00

These calculations are only a guide. Please ask your conveyancer for exact calculations.

Monthly Levy R950 **Monthly Rates** R300 **Sectional Title Levy** R1,100

2 Bedroom Apartment For Sale in Heuwelsig Estate

NO TRANSFER DUTY

SPACIOUS AND SECURE

First-floor apartment situated in a safe and secure Estate featuring:

- Spacious open plan kitchen with breakfast nook, hob, under counter oven and extractor
- Cozy lounge
- Snug en suite master bedroom with shower
- Second snug bedroom
- Second bathroom with a bathtub
- 2 Carports

Features

Pets Allowed Yes

Interior

Bedrooms	2
Bathrooms	2
Kitchens	1
Recep. Rooms	1

Exterior

Carports / Parkings	2
Security	Yes
Pool	No

Sizes

Floor Size	56m ²
------------	------------------