



Sivanandan
Govindasamy Packary
0824920583
siva@choprop.co.za

Contact Choprop Sales

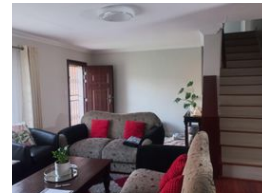
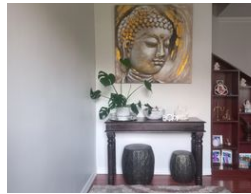
012 6534444

146 Willem Botha Street
Wierda Park
0157

UNDER OFFER



Web Ref RL11613



R2,050,000

 4
  3
  2

Monthly Bond Repayment R21,159.86

Calculated over 20 years at 11% with no deposit.

Transfer Costs R80,947.00 **Bond Costs** R34,625.00

These calculations are only a guide. Please ask your conveyancer for exact calculations.

Monthly Rates R850

Modern and stunning family home in Heuweloord !!!

Make this investment opportunity yours to own today !!!

As one enters on can find an entrance hall, on the right a spacious lounge area, fire place, leading to the dining room and family/ tv room, laminate floors and open onto the garden area, patio, entertainment area overlooking the swimming pool. The separate kitchen is very spacious, scullery, gas stove, granite tops, space for appliances, double door fridge, lots of cupboard space, tiled leading to the laundry area and opening to the outside courtyard. The huge guest bedroom, built in cupboards, laminate floors, bathroom, living area and flows onto the patio area with a louvre deck.

Upstairs one can find two spacious bedrooms, built in cupboards, laminate floors, sharing a newly revamped bathroom, tiled and the master bedroom is huge, built in cupboards, laminate...

Features

Pets Allowed Yes

Interior

Bedrooms	4
Bathrooms	3
Kitchens	1
Recep. Rooms	3
Studies	1

Exterior

Garages	2
Carports / Parkings	2
Security	No
Dom. Accom.	1
Pool	Yes
Views	Yes

Sizes

Floor Size	240m ²
Land Size	500m ²