



Armaan Essa  
0828088886  
armaan@choprop.co.za

Contact Choprop Sales

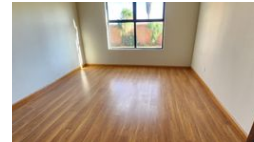
0126534444  
0126534444

146 Willem Botha Street  
Wierda Park  
0157



SOLE MANDATE

Web Ref RL14398



## POA

3 3.5 2

WHERE LUXURY MEETS MODERNITY - YOUR NEXT NEW HOME AWAITS! CHRISTOBURG / ERASMIA!

Introducing a stunning modern single-story property in the heart of Erasmia, embodying luxury, convenience, and contemporary design. This practically brand-new home boasts three spacious bedrooms, each with its own en-suite bathroom, ensuring comfort and privacy for all occupants.

Upon entering, you'll be greeted by open living areas flooded with natural light, creating an inviting and airy atmosphere. Complimented by a fireplace to warm up the entire living area. There is a separate family room, surrounded by aluminum doors, works as an ideal entertainment room or a separate lounge. The centerpiece of the home is the modern farm-style kitchen, thoughtfully designed with sleek finishes, ample storage with its top-of-the-line cupboards, a gas stove, just perfect for both casual family meals and entertaining guests.

Step...

## Features

Interior		Exterior		Sizes	
Bedrooms	3	Garages	2	Floor Size	365m <sup>2</sup>
Bathrooms	3.5	Carports / Parkings	4	Land Size	1,100m <sup>2</sup>
Kitchens	2	Security	Yes		
Recep. Rooms	3	Dom. Accom.	0.5		
Studies	1	Pool	No		