

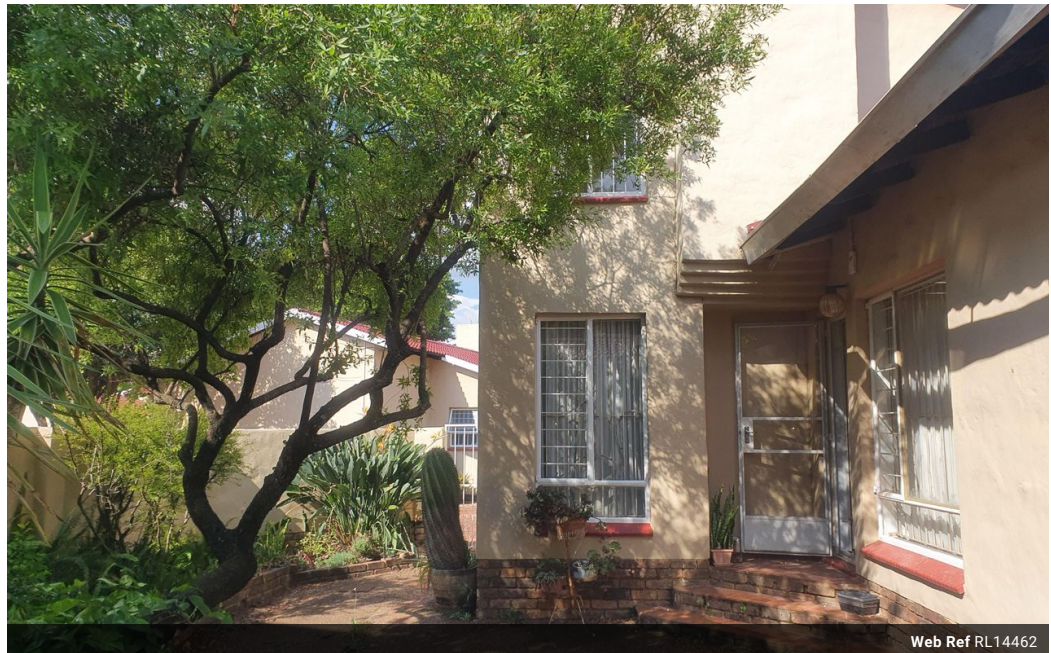


**Nadia Chetty**  
0797799222  
nadia@choprop.co.za

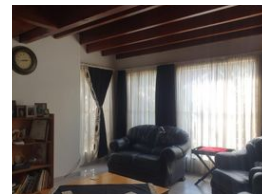
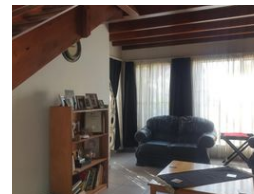
Contact Choprop Sales

012 6534444

146 Willem Botha Street  
Wierda Park  
0157



Web Ref RL14462



**R1,490,000**

 3  2  2

**Monthly Bond Repayment** R15,379.61  
Calculated over 20 years at 11% with no deposit.

**Transfer Costs** R45,485.00 **Bond Costs** R28,990.00

These calculations are only a guide. Please ask your conveyancer for exact calculations.

**Monthly Levy** R2,655 **Monthly Rates** R970

### CHARMING 3 BEDROOM TOWNHOUSE FOR SALE IN ELDORAIGNE

#### LOCATION! LOCATION!

Situated within close proximity to the Eldo Village Shopping Centre, and main arteriole traffic routes, this delightful townhouse, in a secure complex with swimming pool and park, is perfect for beginners, or for someone keen to invest in a "buy-to-let" property.

Boasting 3 spacious bedrooms ( all neatly tiled, and with built-in cupboards), and two bathrooms (main ensuite), the home also offers a super-sized, carpeted, versatile, loft area. Currently used as a fourth bedroom, it makes the perfect study or second lounge.

There are two living areas and an ample-sized kitchen which can accommodate all the modern conveniences.

The low-maintenance garden area is paved throughout, and the two garages lead into the laundry courtyard. There is also additional visitor parking within the complex....

### Features

#### Interior

Bedrooms	3
Bathrooms	2
Kitchens	1
Recep. Rooms	2
Studies	1

#### Exterior

Garages	2
Pool	No

#### Sizes

Floor Size	188m <sup>2</sup>
------------	-------------------