



**Sivanandan Govindasamy Packary**  
 0824920583  
 siva@choprop.co.za

Contact Choprop Sales

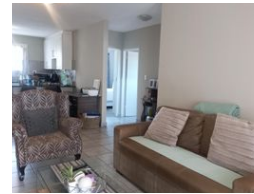
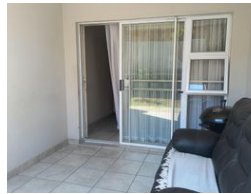
012 6534444

146 Willem Botha Street  
 Wierda Park  
 0157



SOLE MANDATE

Web Ref RL13834



**R1,060,000**

 2  2  1

**Monthly Bond Repayment** R10,941.20  
 Calculated over 20 years at 11% with no deposit.

**Transfer Costs** R32,749.00 **Bond Costs** R25,220.00

These calculations are only a guide. Please ask your conveyancer for exact calculations.

**Monthly Levy** R1,960 **Monthly Rates** R670

Calling all investors and first time buyers !!!

Make this investment opportunity yours to own today!!

As one enters one can find a spacious open plan kitchen, Space for electrical appliances, lots of cupboard space, breakfast nook, tiled, flowing into the dining room, lounge area and opening onto a open patio area overlooking the garden.

The main en-suite bedroom, built in cupboards, tiled and bathroom, tiled. The second bedroom, built in cupboards, tiled and sharing a bathroom, tiled.

The apartment offers a single garage, single covered carport, pre paid water and electricity. The unit is currently tenanted with a rental income.

The complex is in close proximity to shopping centers, Centurion Mall, schools, contributing to a well round community lifestyle. Its location in centurion places it within reasonable commuting distance to major business hubs in...

## Features

### Interior

Bedrooms 2  
 Bathrooms 2  
 Kitchens 1  
 Recep. Rooms 2

### Exterior

Garages 1  
 Carports / Parkings 1  
 Security Yes  
 Pool No  
 Views Yes

### Sizes

Floor Size 115m<sup>2</sup>