



**Nadia Chetty**  
0797799222  
nadia@choprop.co.za

Contact Choprop Sales

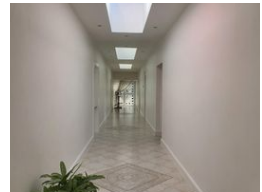
012 6534444

146 Willem Botha Street  
Wierda Park  
0157

FEATURED



Web Ref RL9449



**R2,695,000**

 4  3  3

**Monthly Bond Repayment** R27,817.48  
Calculated over 20 years at 11% with no deposit.

**Transfer Costs** R133,487.00 **Bond Costs** R40,300.00  
These calculations are only a guide. Please ask your conveyancer for exact calculations.

**Monthly Levy** R1,500 **Monthly Rates** R1,479

SINGLE STORY SPLENDOR IN A SUPERB LOCATION OF THE SUBURB

With its cool, cream-colored walls, white aluminium window frames and stainless-steel finish garages, this single story home, situated in Claudius Extension 1, makes an eye-catching statement. An established front garden and bespoke finishes throughout adds to the allure of this splendid home. Once inside, the skylights in the passage and the voluminous high ceilings in the kitchen and living areas add to the marvelous sense of space and light. The ample-sized gourmet kitchen which leads seamlessly to the massive dining area and tv room is undoubtedly the hub of this family home. Exquisitely finished in modern high-gloss wood and stainless steel as well as granite tops, the kitchen boasts a large walk-in-pantry room, separate scullery, gas hob and electric hobs, twin eye-level ovens and separate scullery. A...

Features

<b>Pets Allowed</b>	Yes		
<b>Interior</b>		<b>Exterior</b>	<b>Sizes</b>
Bedrooms	4	Garages	3
Bathrooms	3	Security	Yes
Kitchens	1	Dom. Accom.	1
Recep. Rooms	4	Pool	No
Studies	1		
			Floor Size 428m <sup>2</sup>
			Land Size 935m <sup>2</sup>