



Mansukh Magan Chhiba
0765779222
mansukh@choprop.co.za



Sivanandan Govindasamy Packary
0824920583
siva@choprop.co.za

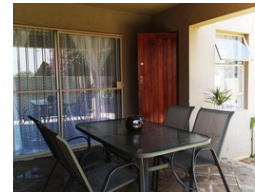
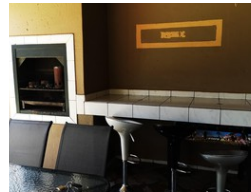
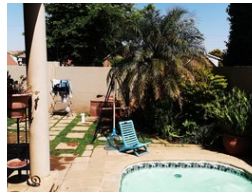
Contact Choprop Sales

0126534444
0126534444

146 Willem Botha Street
Wierda Park
0157



Web Ref RL3182



R1,395,000

3 2.5 1

Monthly Bond Repayment R14,399.03

Calculated over 20 years at 11% with no deposit.

Transfer Costs R40,467.00 **Bond Costs** R27,105.00

These calculations are only a guide. Please ask your conveyancer for exact calculations.

Monthly Levy R3,200 **Monthly Rates** R800

Calling all investors and first time buyers !!!

SERIOUS OFFERS WILL BE CONSIDERED

This 191sqm duplex is a true investor's dream with a large number of amenities to keep a family comfortable and content. The neat and well located duplex is also ideal and comfortable for a family seeking comfort, security and investment value. The modern and open plan living area leads out via a sliding door to a private, landscaped enclosed garden with a sparkling splash pool. The living area, like the rest of the unit, is tiled. The living area leads to a large dining area as well as a comfortable size kitchen with its four plate stove, modern kitchen units with granite tops comfortably leading to the scullery. The kitchen also leads to the spacious yard with its well designed garden and splash pool. The braai area and the enclosed patio leads comfortably onto the pool area thus giving...

Features

Pets Allowed Yes

Interior

Bedrooms	3
Bathrooms	2.5
Kitchens	1
Recep. Rooms	2
Furnished	No

Exterior

Garages	1
Carports / Parkings	1
Security	Yes
Pool	Yes
Views	Yes

Sizes

Floor Size	191m ²
Land Size	200m ²

Extras

Balcony Built-in Kitchen Appliances Built-in Wardrobes Covered Parking Private Garden Private Pool Security Plenty of private parking