



Sivanandan
Govindasamy Packary
0824920583
siva@choprop.co.za

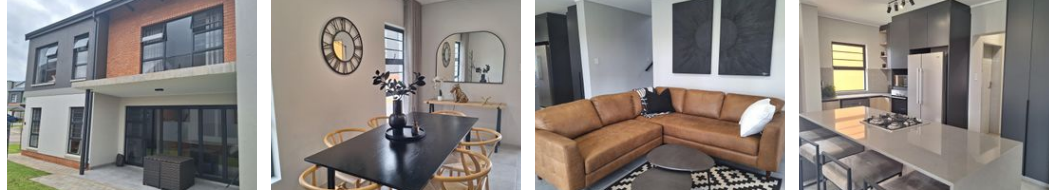
Contact Choprop Sales

012 6534444

146 Willem Botha Street
Wierda Park
0157



Web Ref RL28321



R3,000,000

 4  2.5  2

Monthly Bond Repayment R30,965.65

Calculated over 20 years at 11% with no deposit.

Transfer Costs R160,211.00 **Bond Costs** R42,185.00

These calculations are only a guide. Please ask your conveyancer for exact calculations.

Monthly Levy R2,600 **Monthly Rates** R1,876

Modern living in Amberfield City- Buy direct from the developer!!!

Make this investment opportunity yours to own today!!!

Modern New Development in Amberfield - Buy Direct & Save!

Discover the perfect blend of serenity and security in this beautifully designed community, featuring scenic walkways, lush park spaces, and premium shared amenities. Buy directly from the developer and enjoy savings on transfer costs-plus, bond registration fees are included!

This charming 3-bedroom, 2.5-bathroom free-standing home offers a private garden for your relaxation and entertainment. The automated tiled garage conveniently connects to the house through the scullery, ensuring seamless access.

Step into a stylish, modern kitchen boasting a sleek waterfall island with a prep bowl, while the separate scullery provides ample space for three appliances.

Designed for effortless entertaining, this...

Features

Pets Allowed Yes

Interior

Bedrooms	4
Bathrooms	2.5
Kitchens	1
Recep. Rooms	2

Exterior

Garages	2
Carports / Parkings	2
Security	Yes
Pool	Yes
Views	Yes

Sizes

Floor Size	201m ²
------------	-------------------