



**Lucy Martha Matseba**  
0842790300  
lucy@choprop.co.za

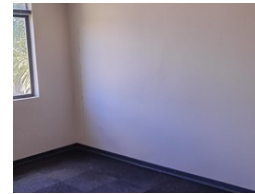
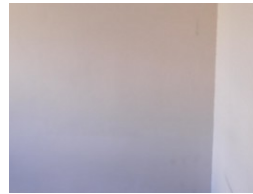
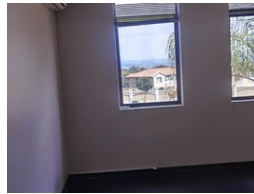
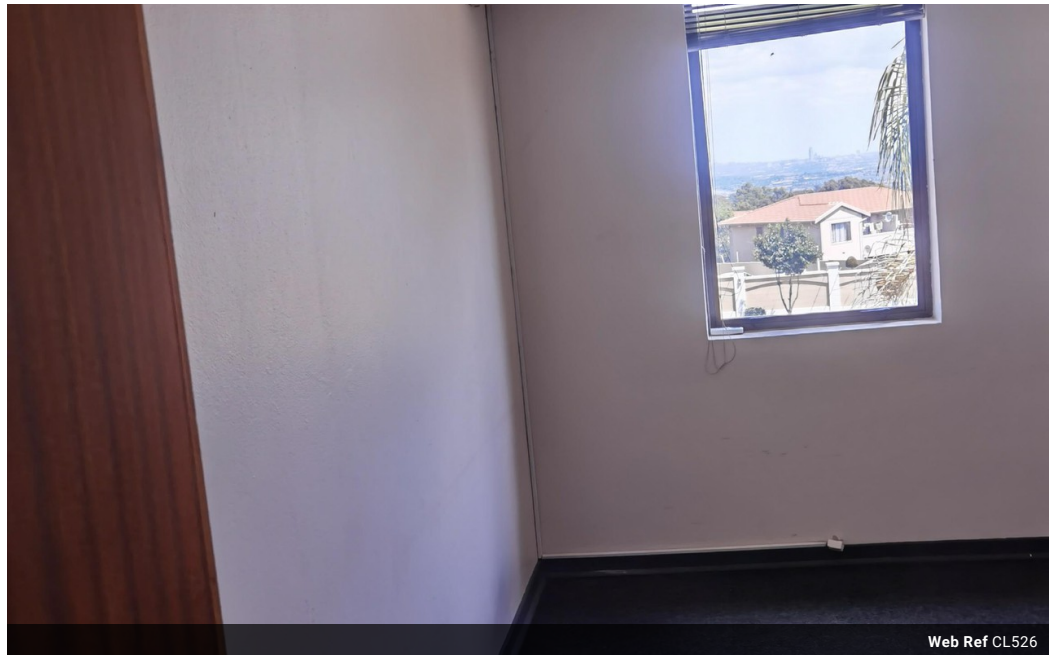


**Libuseng Lillian Mokotleng**  
0824028574  
libuseng@choprop.co.za

Contact Choprop Rentals

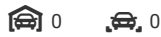
012 6534444

146 Willem Botha Street  
Wierda Park  
0157



**R264 per m<sup>2</sup>**

**Gross Monthly Rental R4,500 Excl. VAT**



Well-located office space priced from R190 per sqm and available immediately

The office park is highly visible and easily accessed from New Road or Olifantsfontein. It offers a space for a boardroom, Cafeteria for refreshments, 24-hour security and access control, as well as ample parking with basement, and open facilities available. These offices are well-positioned for convenience allowing easy access to the highways taking you to Pretoria, Sandton, CBD, and the greater Gauteng area.

Suitable for either single- or multi-tenant use, make the space to suit your business needs.

## Features

<b>Building Name</b>	5 New Road Office Park
<b>Zoning</b>	Commercial
<b>Sizes</b>	
Floor Size	17m <sup>2</sup>
<b>Extras</b>	
Security	